

FCC Precast

Concrete & Precast Specialist

مصنع سامر محمد زهير فطاييرجي للمنتجات الاسمنتية

Phone: 012 691 6231

Fax: 012 691 3098

email: info@fatayerji.com

0126913098 فاكس

0126916231 هاتف

PRODUCT CATALOGUE



Fatayerji Contracting Company Ltd.
Concrete & Precast Specialist (2021-22)

On behalf of FCC Chairman & Board Members; we are honored to provide you with FCCs customized precast services and products engineered to satisfy your requirements and specifications.

FCC Precast is operated by **Fatayerji Contracting Company Ltd.** with around 40 years of experience in construction field in the Kingdom of Saudi Arabia and the Gulf Region. FCC provides innovative building solutions for its customers and do not hesitate to offer products and assistance for specific projects and even futuristic projects.

FCC can meet **Mega-Projects** PC production requirements reaching large capacity and quantities of reinforced concrete production including but not limited to: Pre-stressed Elements (Hollow-core slabs, Beams, Columns), Wall Panels, Precast Fences and Miscellaneous precast concrete elements (Manholes, Stairs, Culverts, and Curbs).


Through the years, FCC initiated 5 factories/Precast yards in the SA Kingdom. Each serving a different area with a versatile range of precast products. As for the Riyadh and Asfan factories which are permanent facilities and having the major capacity and product range, can also produce pre-stressed and special elements.

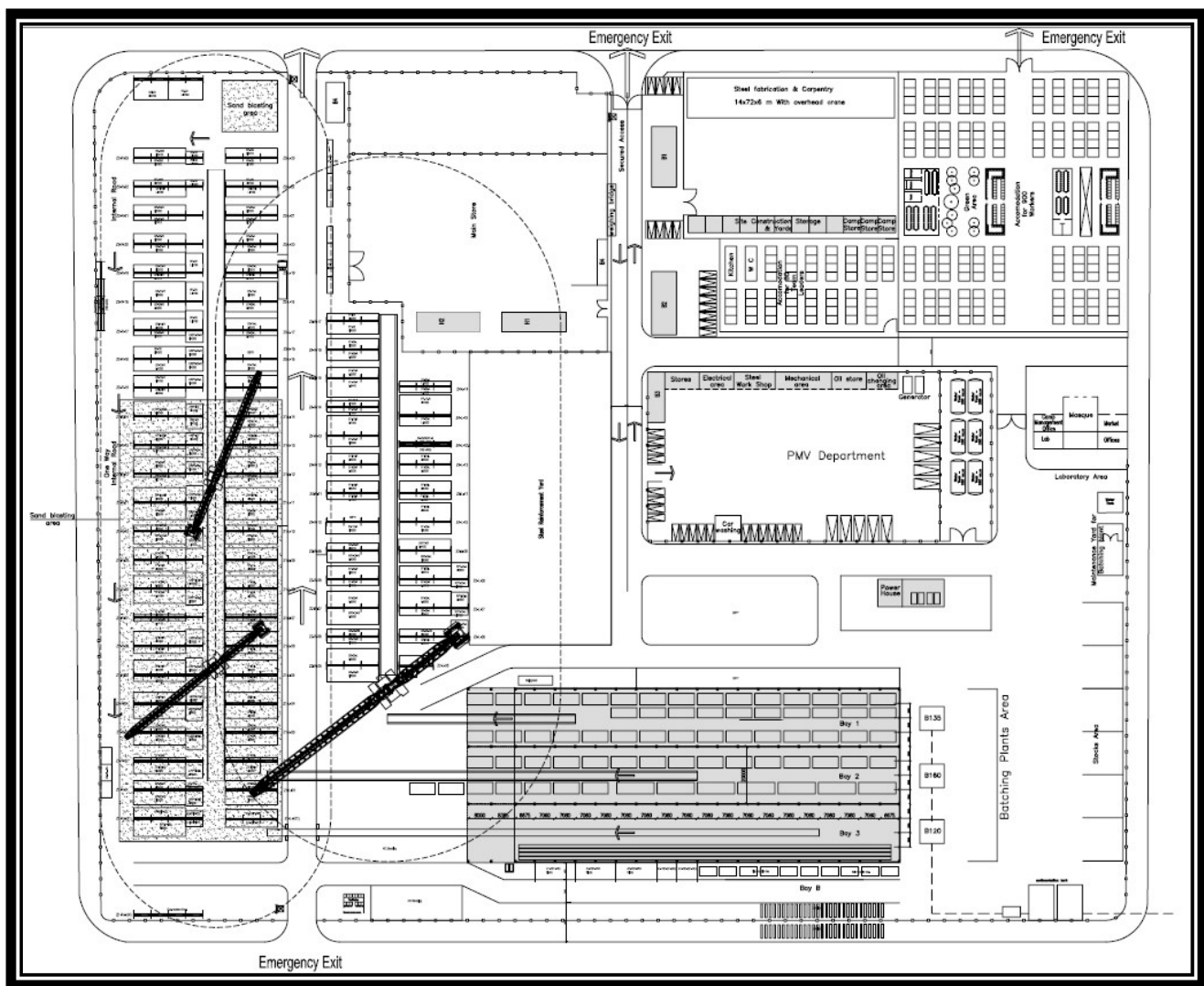
FCC precast production process is strictly controlled by qualified QA/QC team at every stage right from the design through production and up to the delivery & handing over. Providing innovative building solutions for our customers to meet any project requirements...

Hereunder are some of FCC products:

- Beams and Columns (reinforced and pre-stressed elements)
- Boundary Walls
- Cladding Panels
- Concrete Culverts
- Crash Rated Boundary Walls & Fences
- Pre-stressed Hollow Core Slabs
- Pre-stressed I Beams
- Precast Posttensioned Girders
- Manholes, Valve Boxes, Access Shafts...
- Insulated Sandwich panel walls
- Solid walls
- Stairs
- Concrete Barriers, all types
- Concrete Tanks of different capacity
- Culvert, Tunnels Elements
- Wheel stoppers
- Decorative and concrete elements for hardscape...

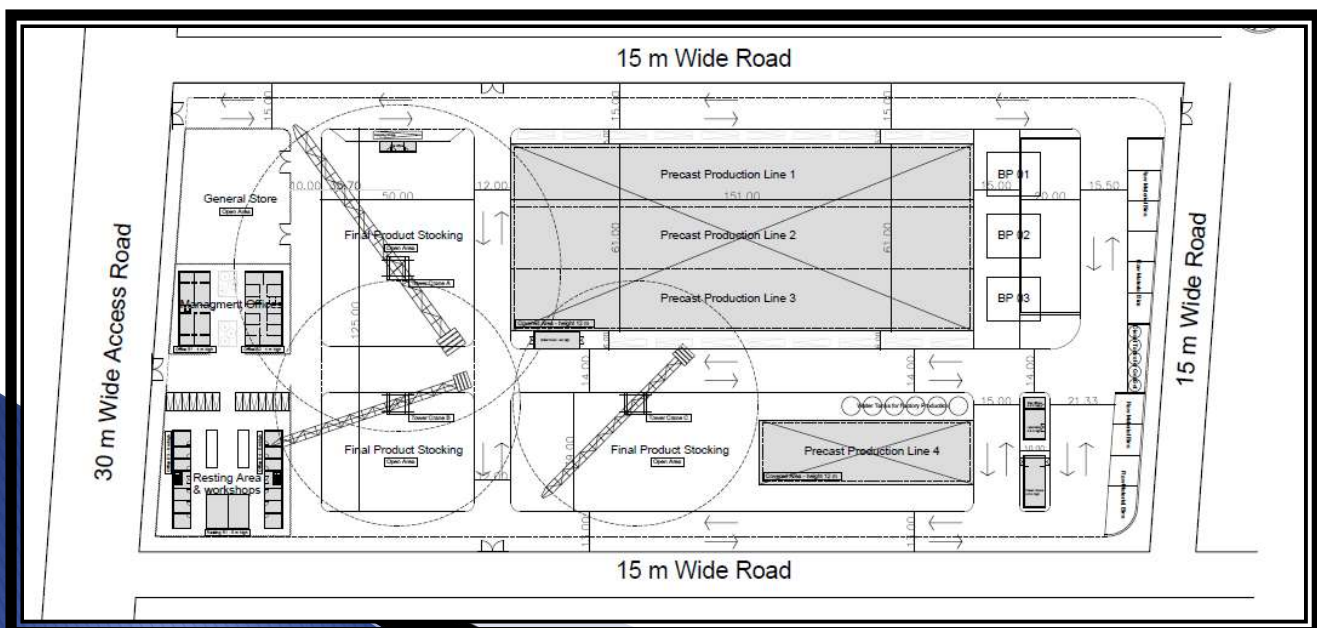
FCC Precast products are in line with the latest/updated manufacturing methodologies and construction building systems. Our products comply with the three concepts of industrialization:

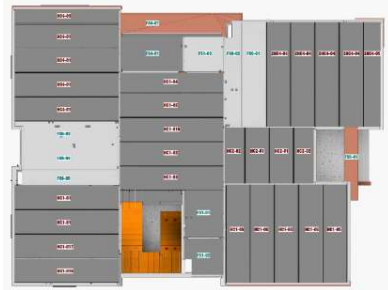
- **Transfer work off-site** to a controlled factory environment characterized in precision and high quality.
 - **Modular and standardized works** to simplify site constructability reducing onsite labour and achieving cost efficiency.
 - **Efficient and simultaneous work** at site and factory to optimize construction time frame.
- 



Riyadh Precast Factory: Permanent Factory covering the central and eastern regions of KSA.

Asfan Precast Factory: Permanent Factory covering the western and northern regions of KSA.





PLAN VIEW



VIEW SHOWING PC WALL ARRANGEMENT

PC PANEL VILLA

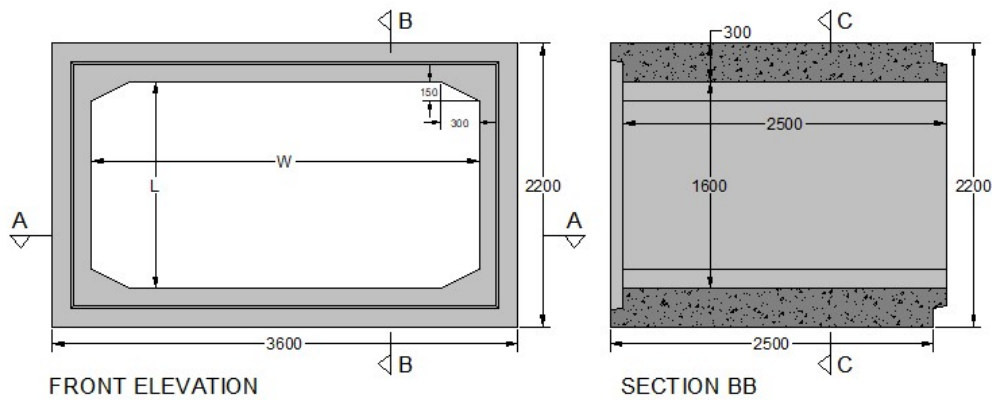
FCC PRECAST



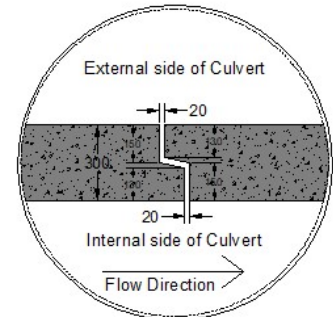
VIEW SHOWING PC WALL ARRAGEMENT

BOX CULVERTS

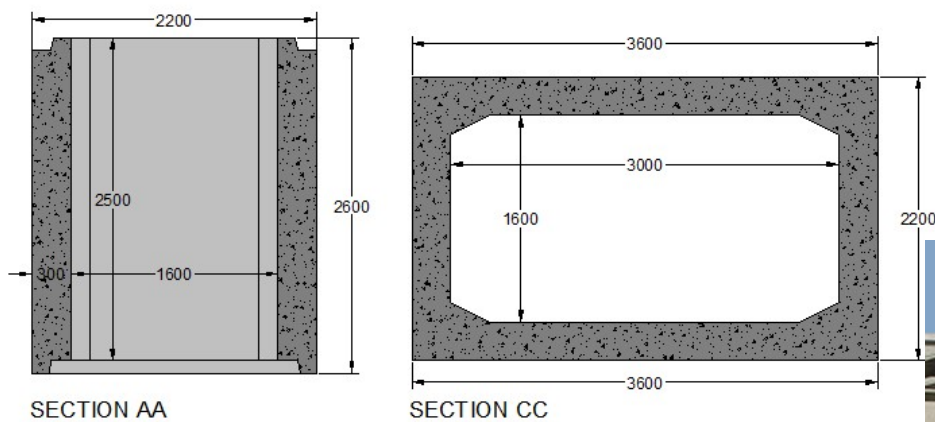
FCC PRECAST



S.R. NO.	CULVERT BASE INTERNAL DIA (W)	CULVERT BASE LENGTH (L)
1	3500	1600
2	3000	1600
3	2800	1600
4	2500	1600
5	2000	1600



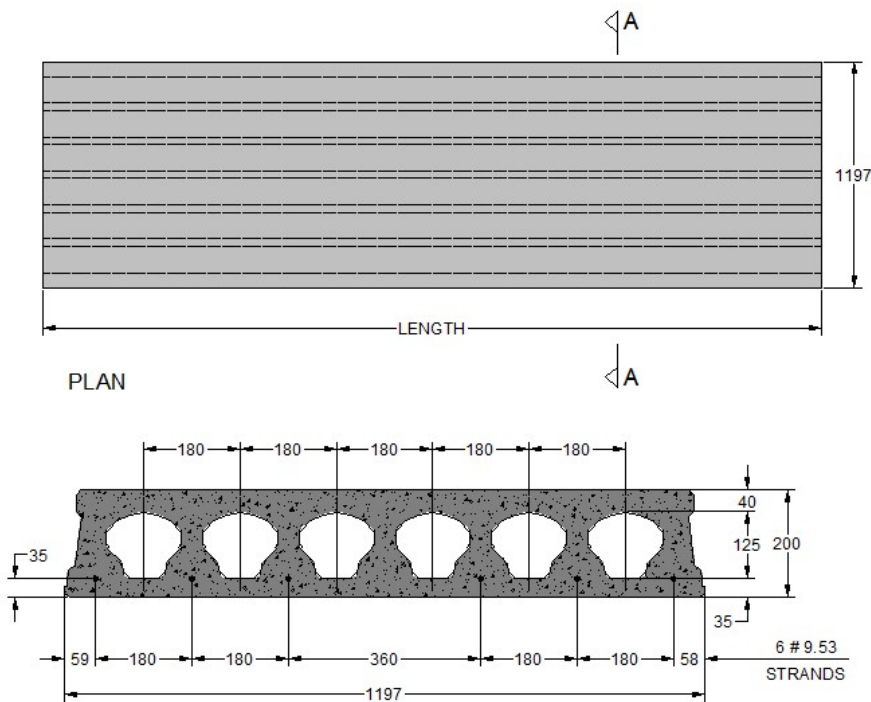
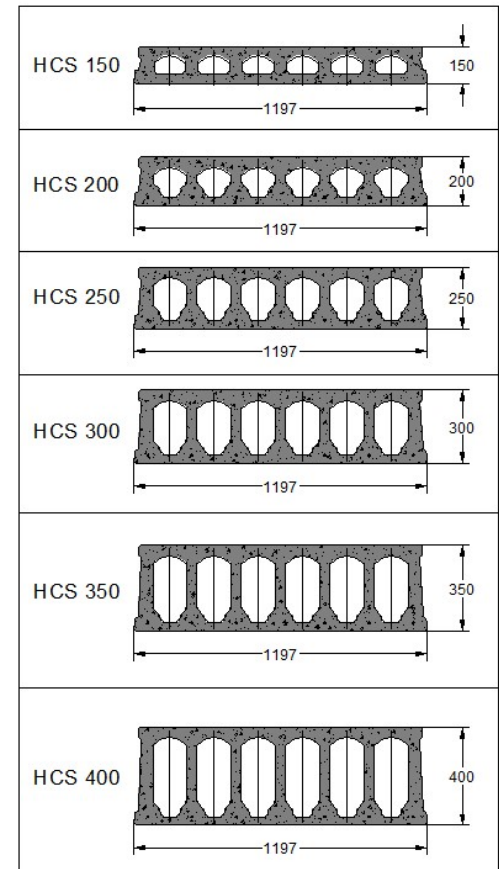
Connection Detail Between 2 Culverts



HOLLOWCORE SLABS

FCC PRECAST

HOLLOWCORE SLABS OF FOLLOWING THICKNESSES 150,200,250,300,350 & 400 OF SUITABLE WIDTH(MAX. WIDTH IS 1197MM) AND LENGTH CAN BE DESIGNED, PRODUCED, SUPPLIED AND INSTALLED.



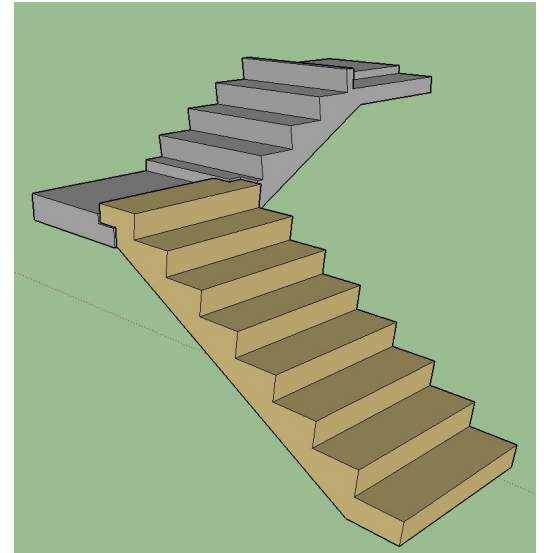
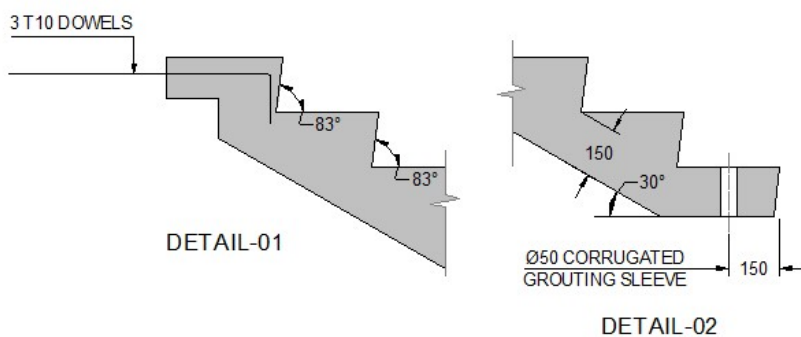
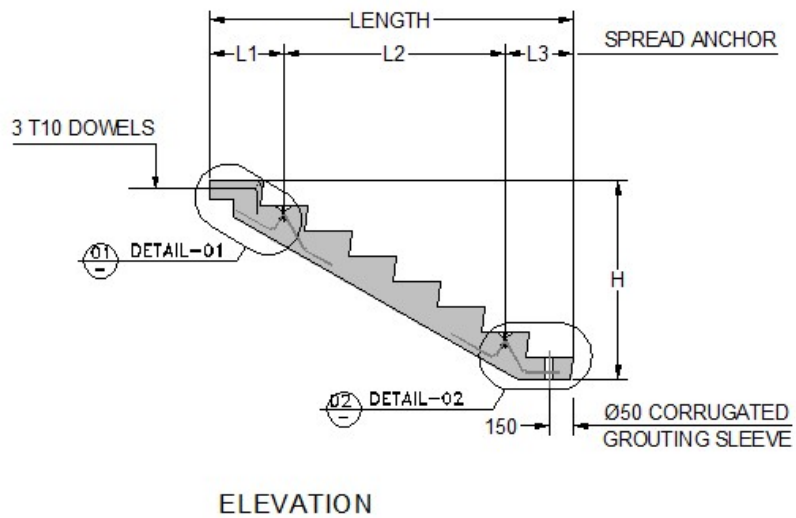
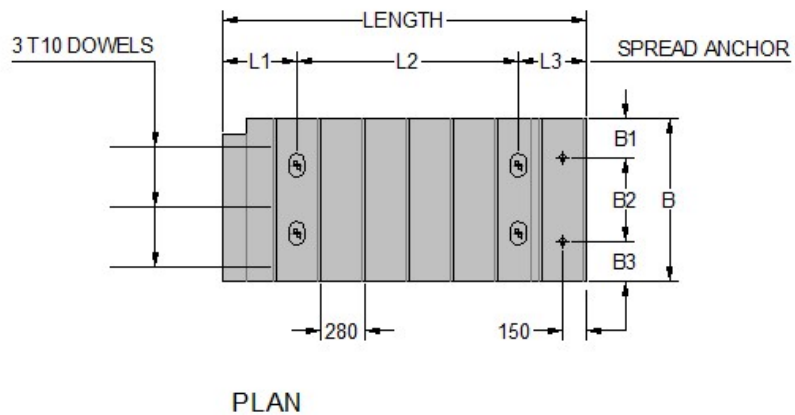
TYPICAL SECTION-AA OF HCS 200 SLAB



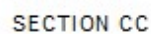
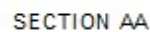
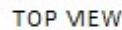
STAIRCASES

FCC PRECAST

CUSTOMIZED TO SIZE



FCC PRECAST



2800

FINISHED LEVEL

PRECAST CONCRETE COVER SLAB CLEAR OPENING 600 DIA

TOP CHAMBER RING Ø1200/2000/2500/HT.=300

CHAMBER RING Ø1200/2000/2500/HT.=600

CHAMBER RING Ø1200/2000/2500/HT.=1200

150 THICK PRECAST CONCRETE CHAMBER RING

MANHOLE STEPS

300 THICK TRANSITION SLAB

CHAMBER BASE Ø1200/2000/2500/HT.=2310

INVERT LEVEL

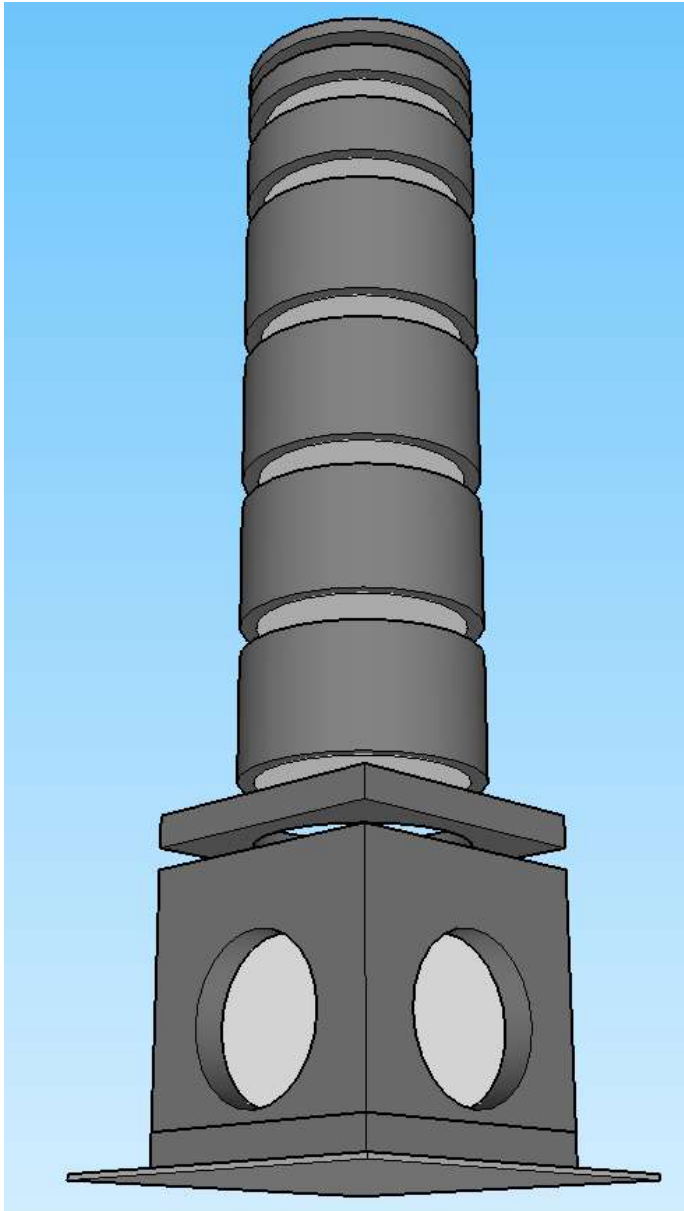
50 MM SAND BEDDING

PRECAST CONCRETE BASE

SECTION BB

MANHOLES

FCC PRECAST

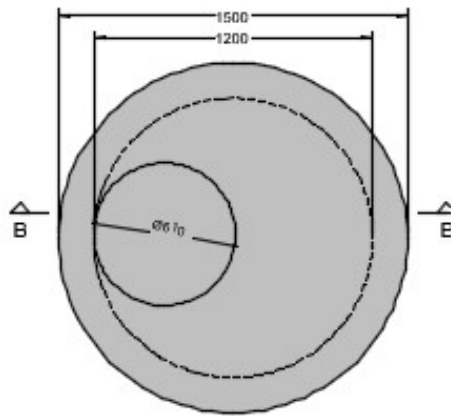


VIEW SHOWING ARRAGEMENT

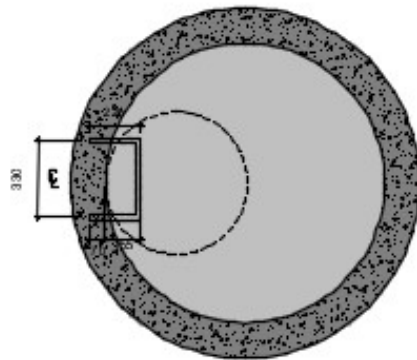


CIRCULAR MANHOLES

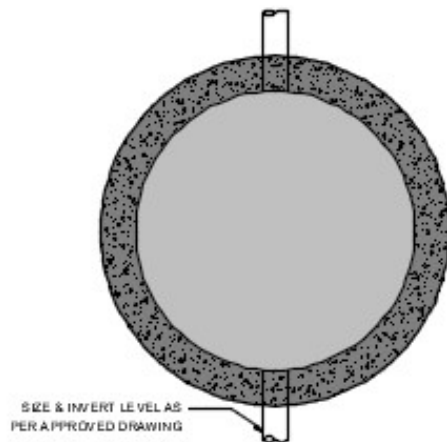
FCC PRECAST



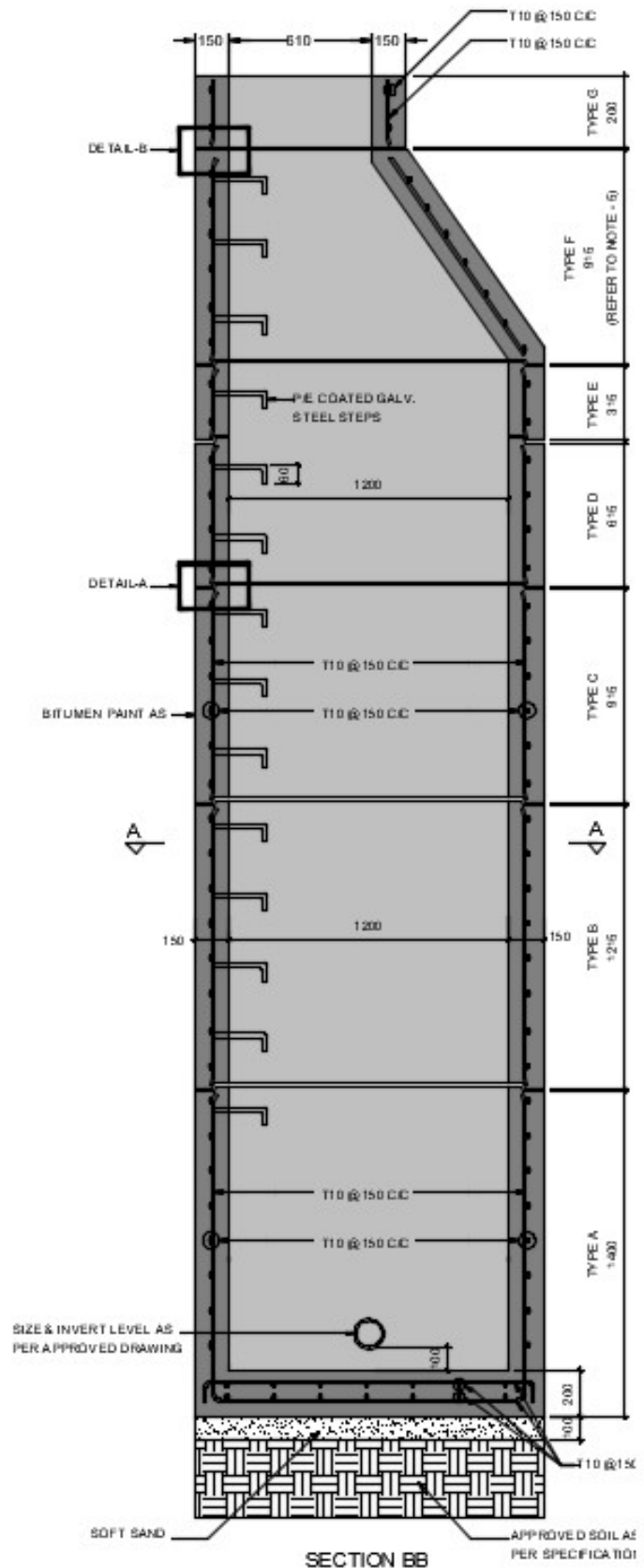
TOP PLAN



SECTION AA

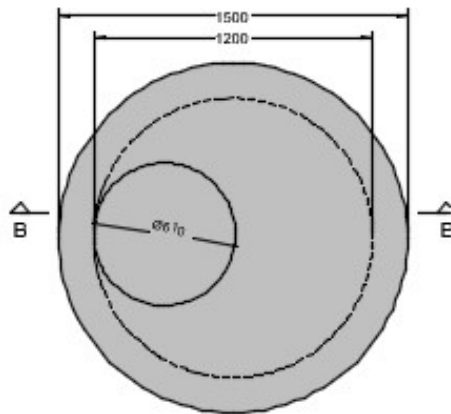


BOTTOM PLAN

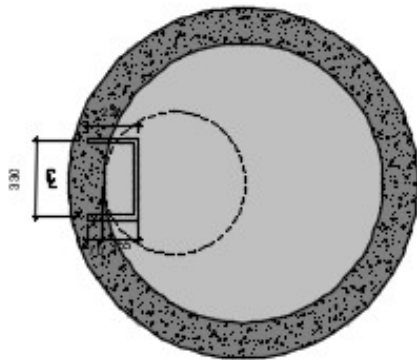


CIRCULAR MANHOLES

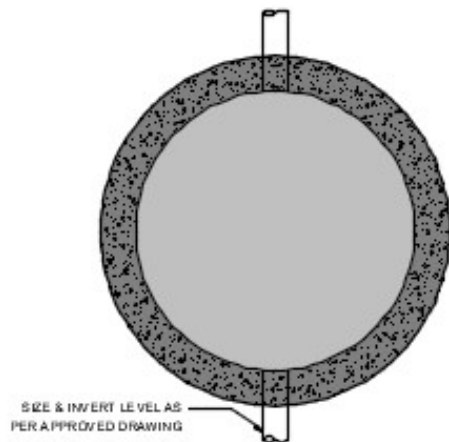
FCC PRECAST



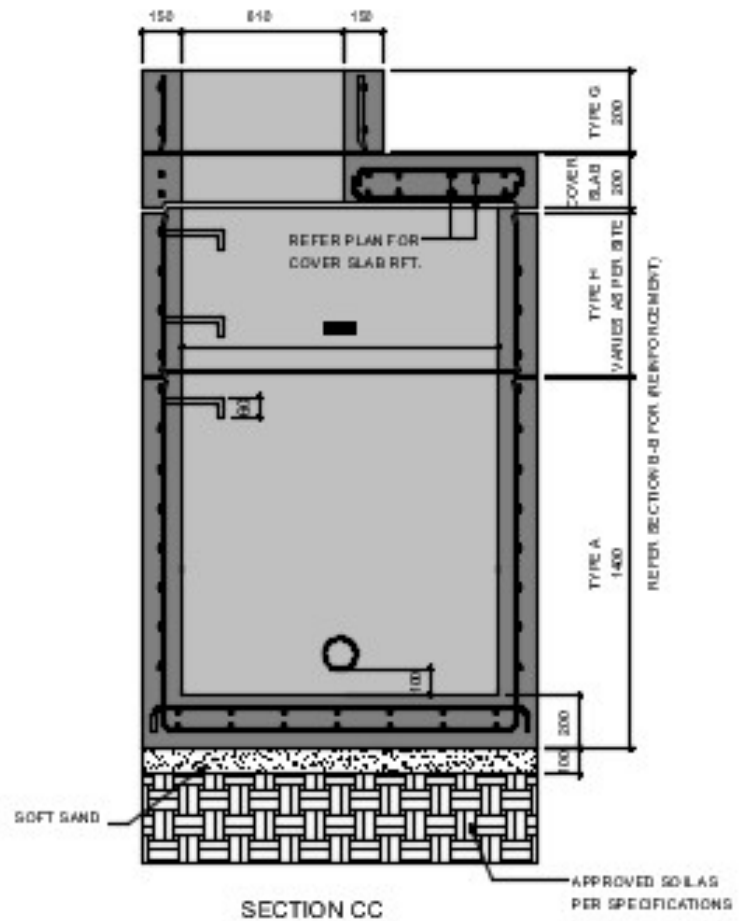
TOP PLAN



SECTION AA



BOTTOM PLAN



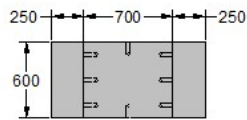
SECTION CC



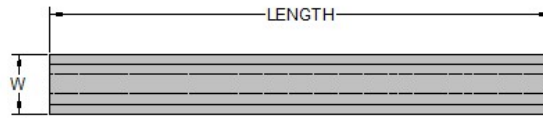
COLUMN & BEAMS

FCC PRECAST

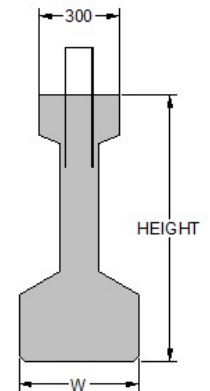
CUSTOMIZED TO SIZE



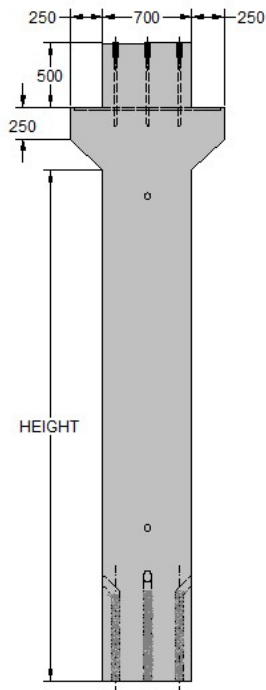
PLAN



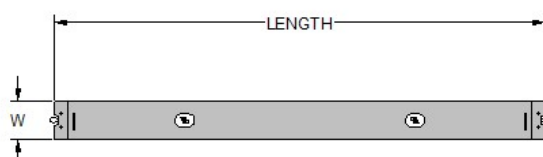
PLAN



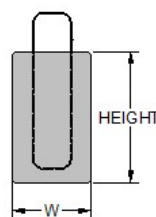
ELEVATION



ELEVATION



PLAN



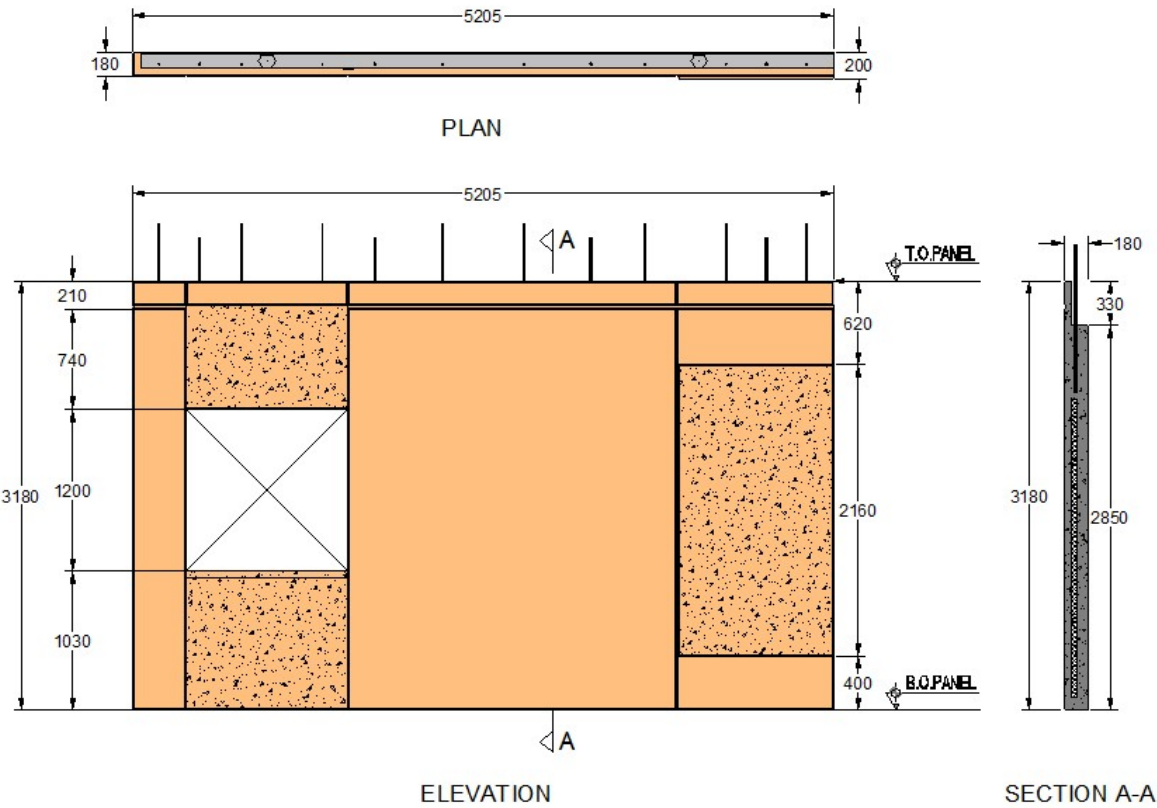
ELEVATION



WALL PANELS

FCC PRECAST

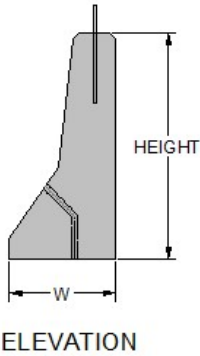
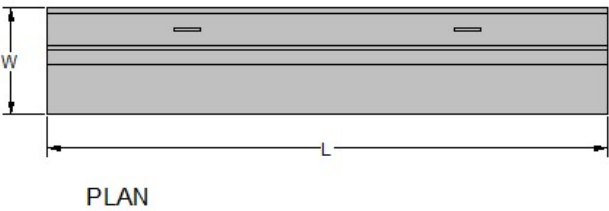
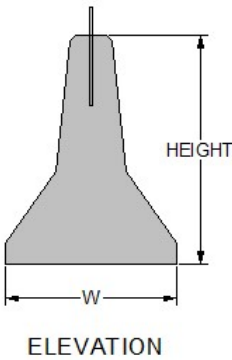
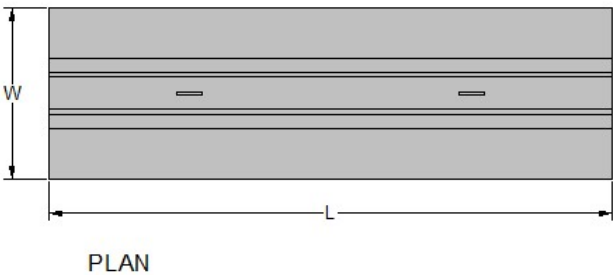
CUSTOMIZED TO SIZE



JERSEY & SIDE BARRIERS

FCC PRECAST

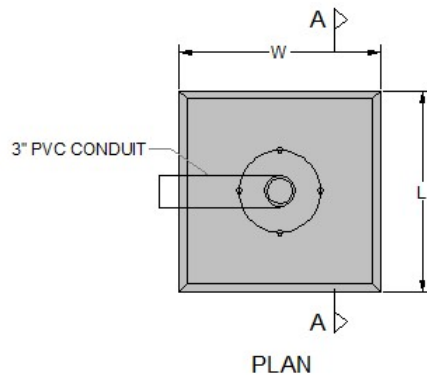
CUSTOMIZED TO SIZE



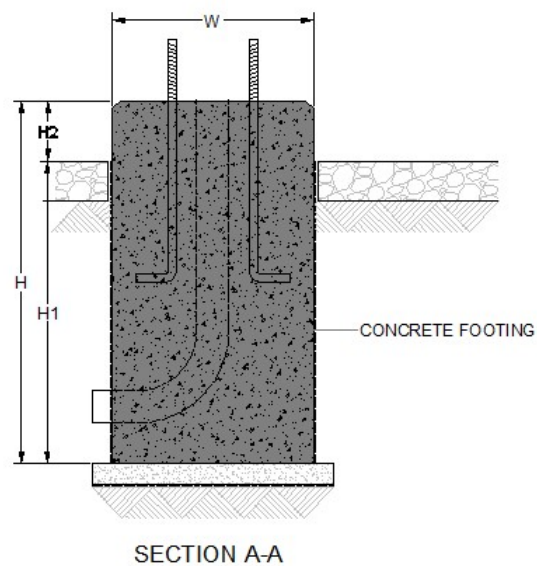
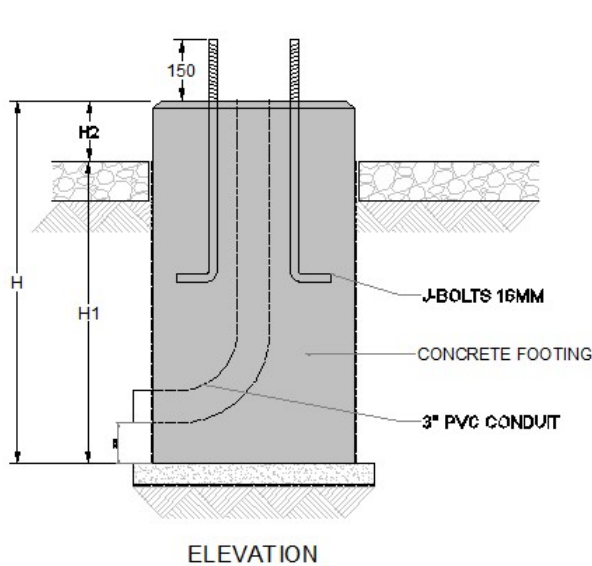
LIGHTING POLES

FCC PRECAST

CUSTOMIZED TO SIZE

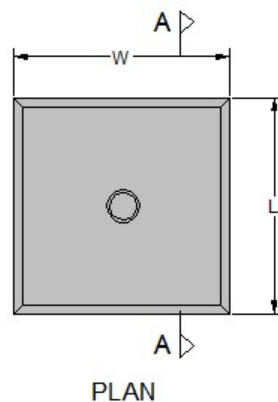
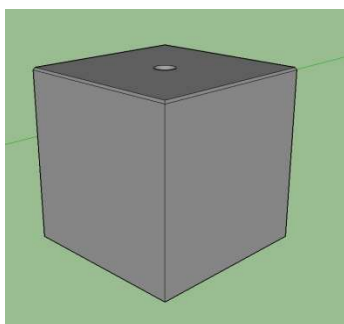


SR. NO.	FOOTING DEPTH (H)	FOOTING SIZE (W X L)
1	900	500 X 500
2	700	1100 X 1100
3	800	800 X 800
4	800	650 X 650

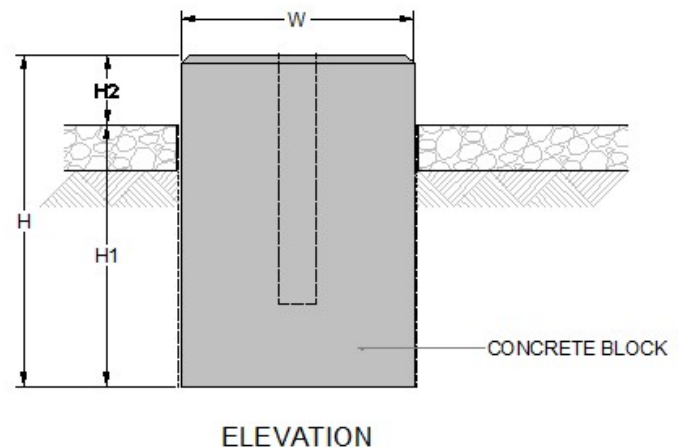


CONCRETE BLOCKS

CUSTOMIZED TO SIZE



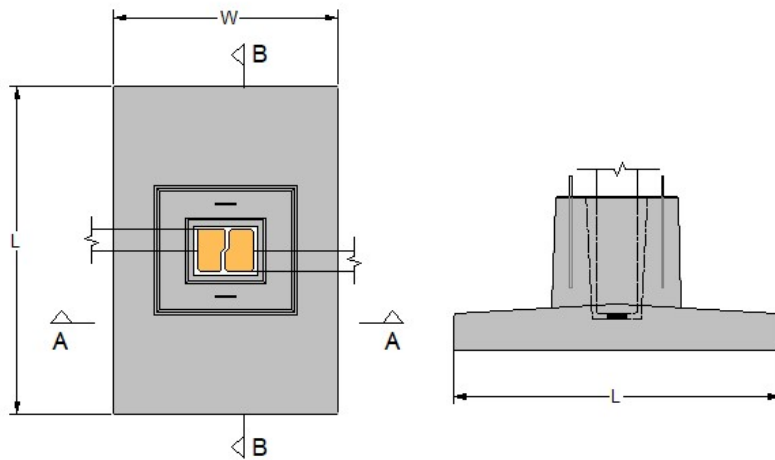
SR. NO.	CONCRETE BLOCK (H)	FOOTING SIZE (W X L)
1	500	500 X 500
2	800	800 X 800



FOOTINGS

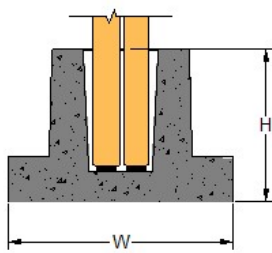
FCC PRECAST

CUSTOMIZED TO SIZE

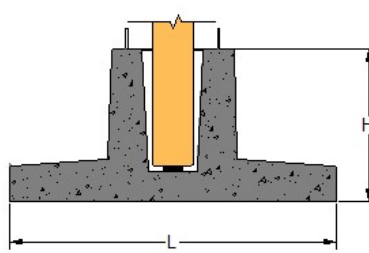


FOOTING PLAN

ELEVATION



SECTION A-A



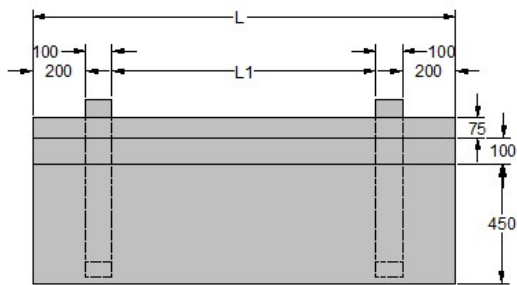
SECTION B-B



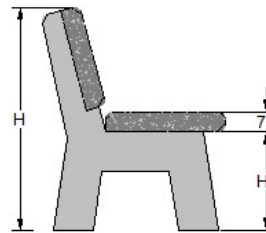
FURNITURES

FCC PRECAST

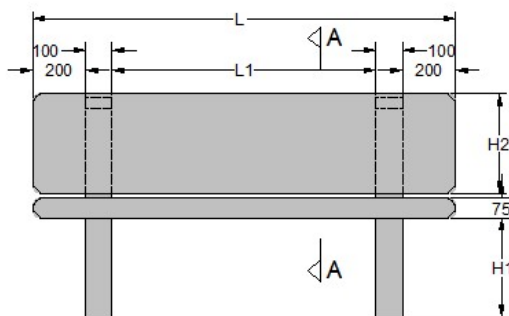
CUSTOMIZED TO SIZE



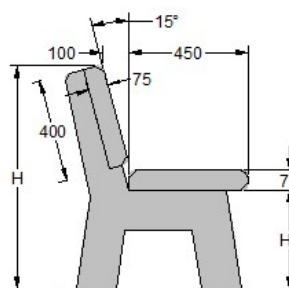
PLAN



SECTION A-A



FRONT ELEVATION

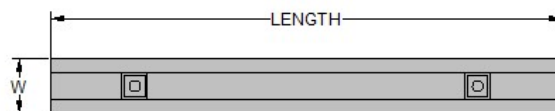


SIDE ELEVATION

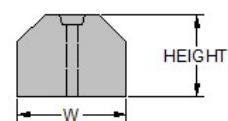


WHEEL STOPPERS

CUSTOMIZED TO SIZE



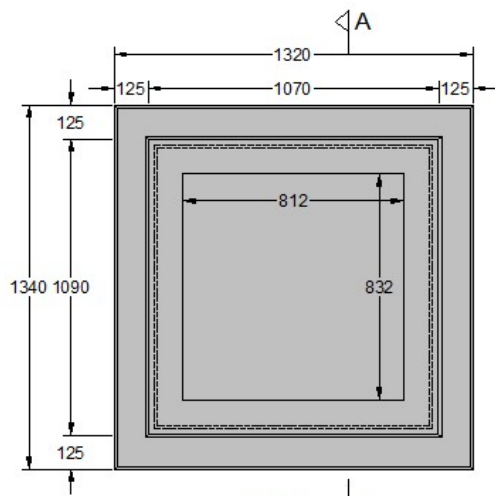
PLAN



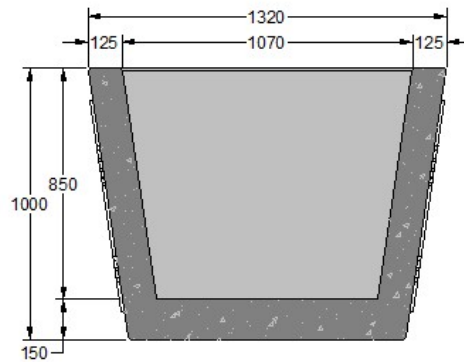
ELEVATION



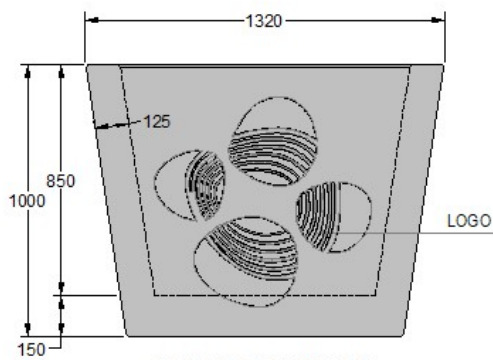
CUSTOMIZED TO SIZE



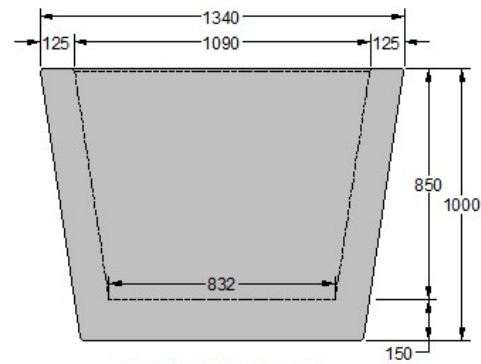
PLAN A



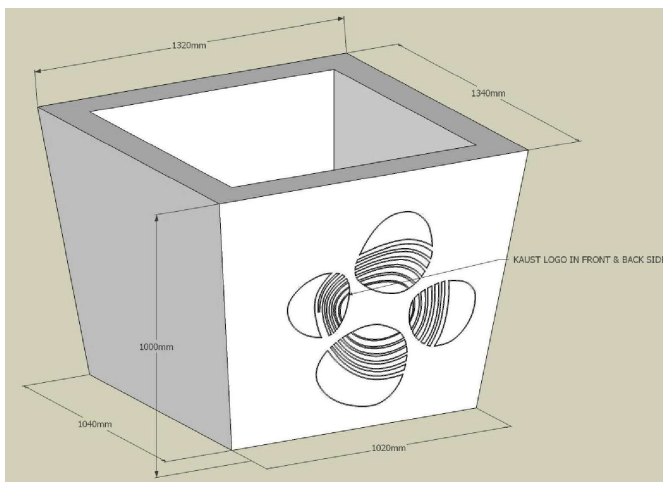
SECTION A-A



FRONT ELEVATION



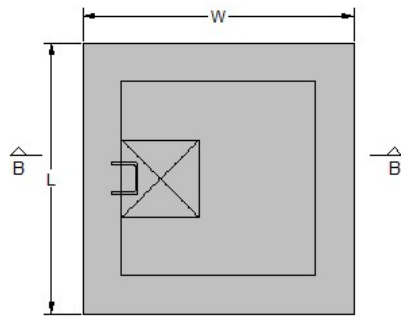
SIDE ELEVATION



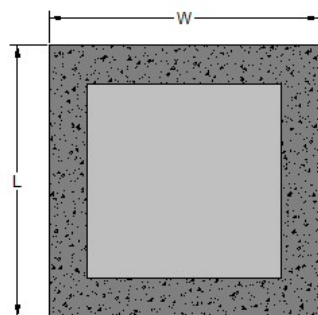
CATCH BASIN

FCC PRECAST

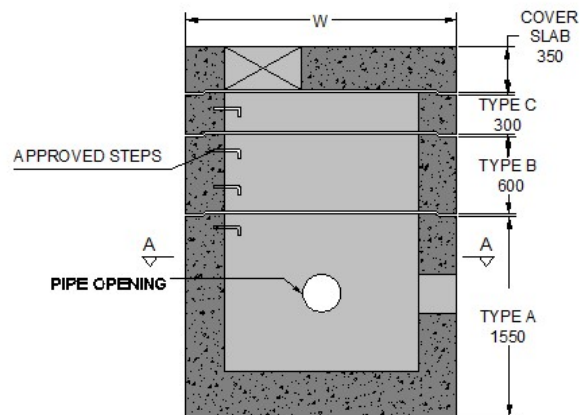
CUSTOMIZED TO SIZE



PLAN



SECTION A-A



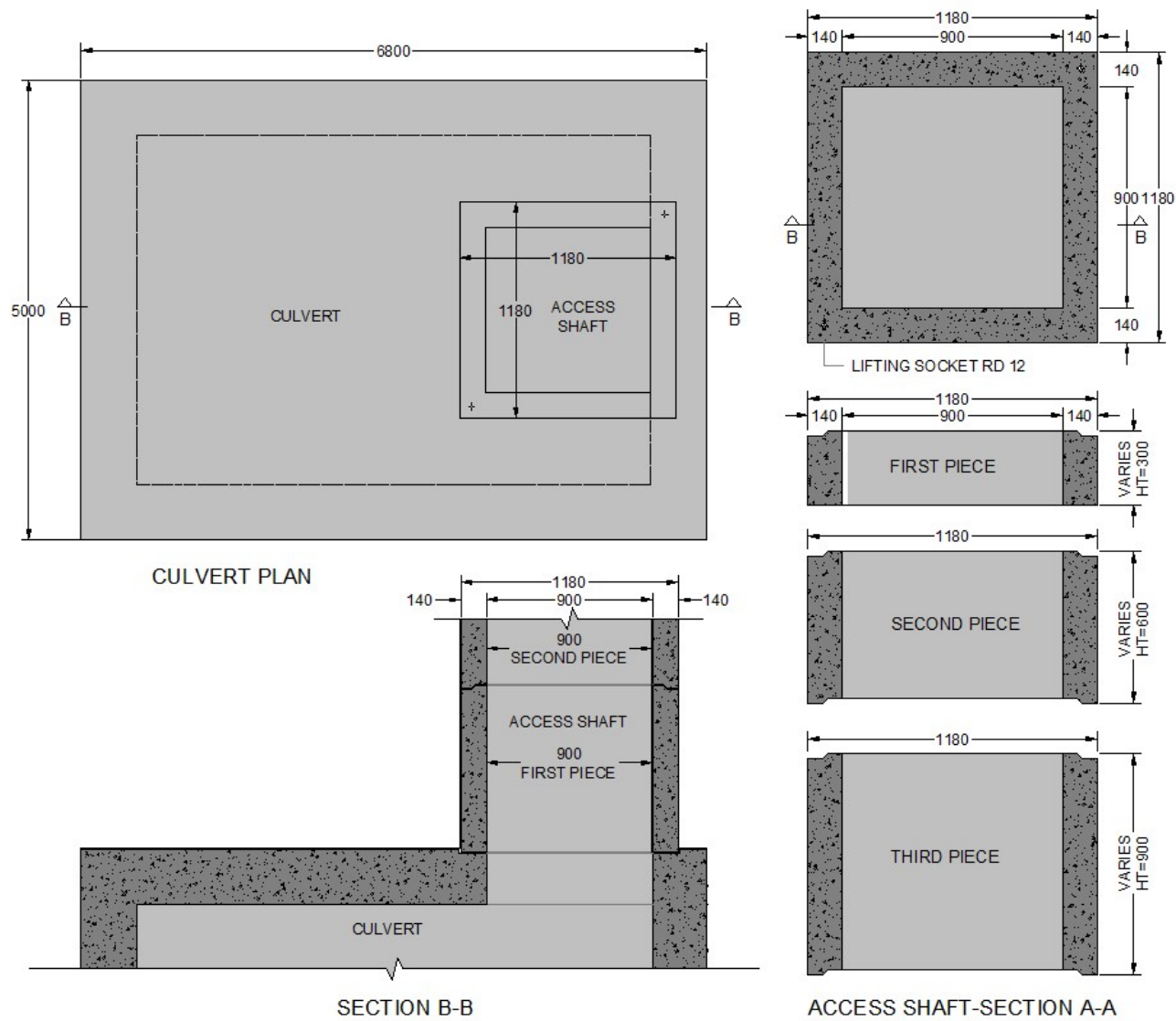
SECTION B-B



ACCESS SHAFTS

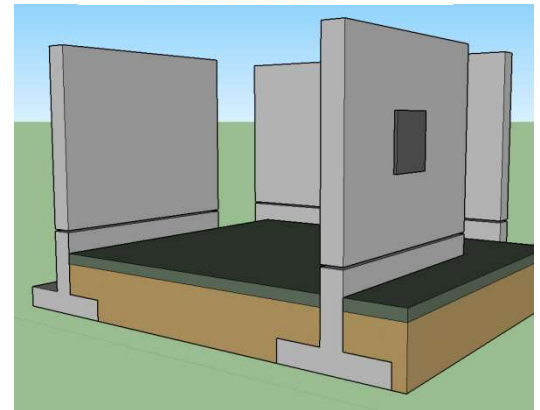
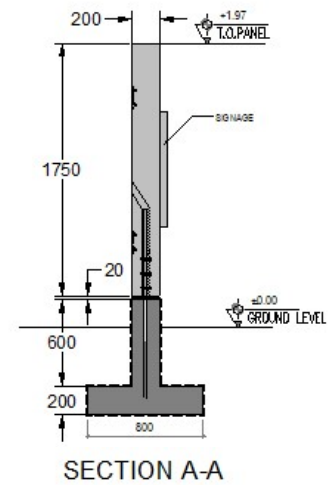
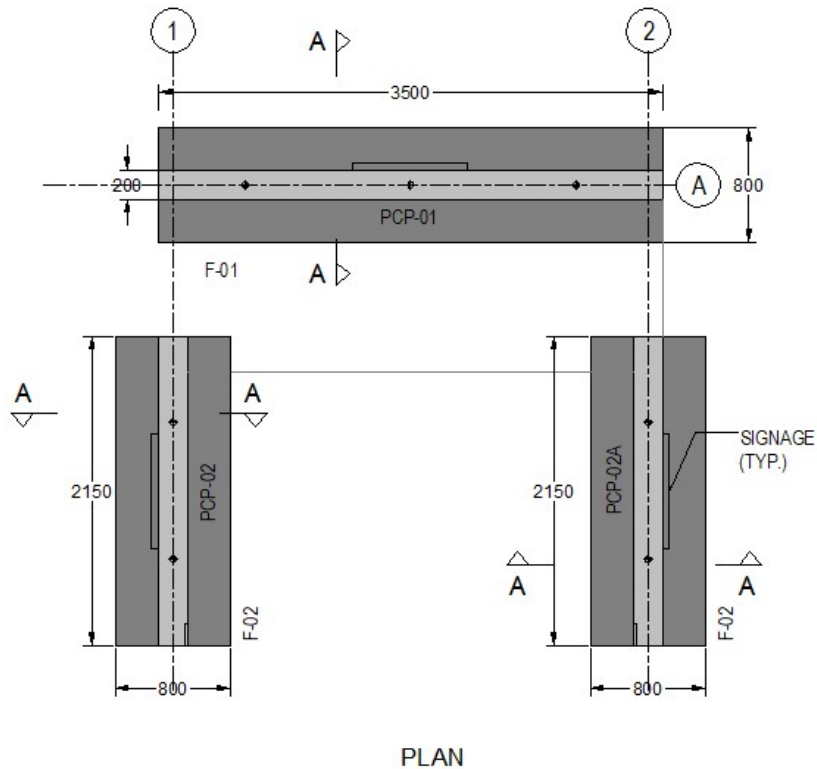
FCC PRECAST

CUSTOMIZED TO SIZE

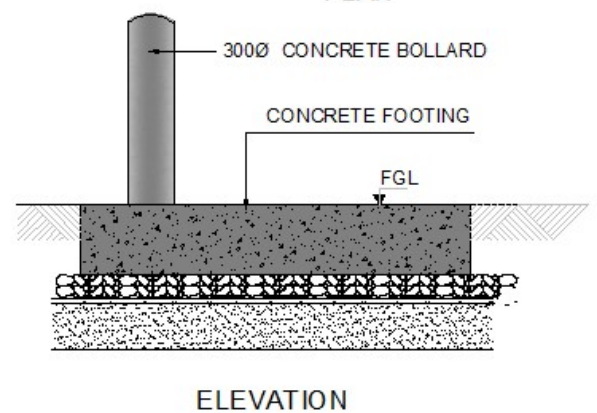
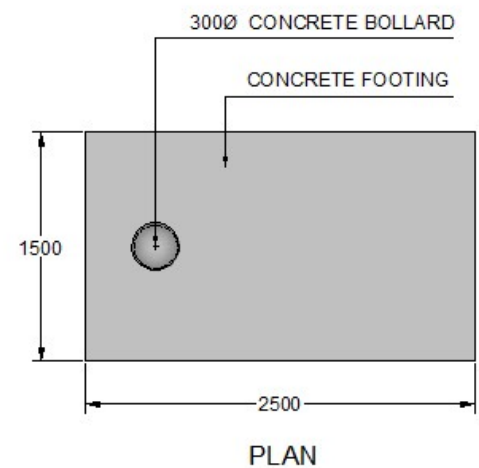
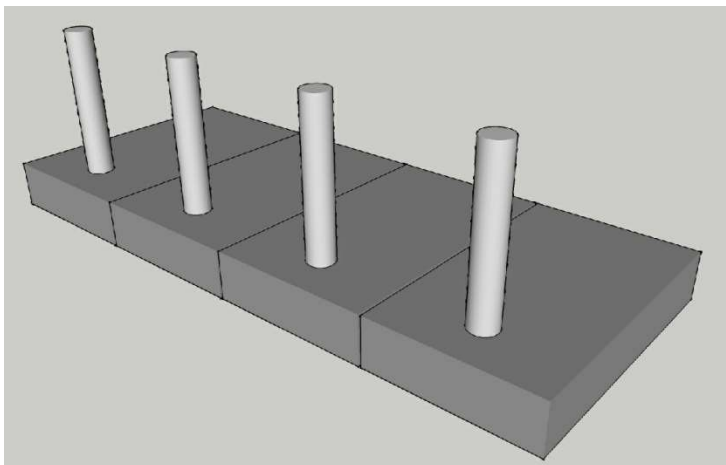


PC TRASH

FCC PRECAST



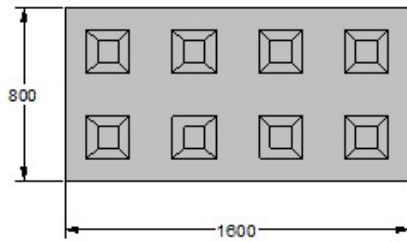
PC BOLLARD



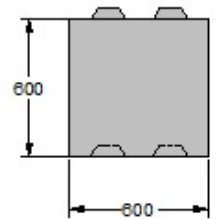
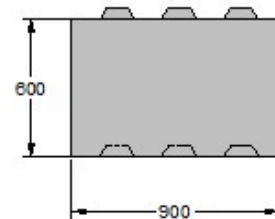
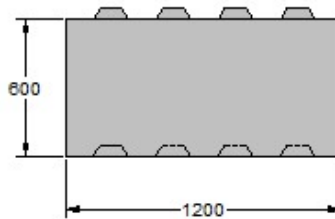
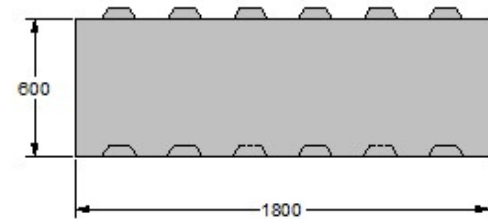
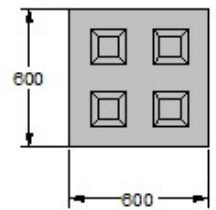
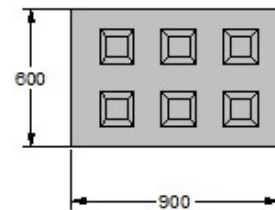
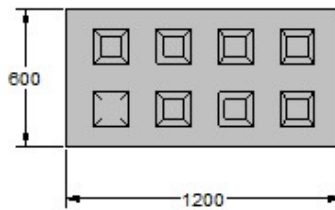
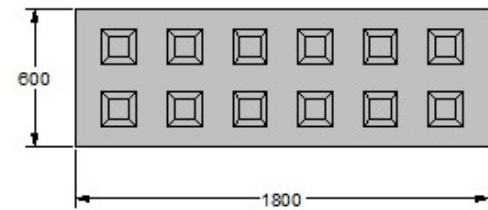
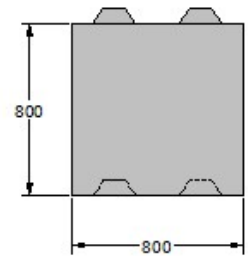
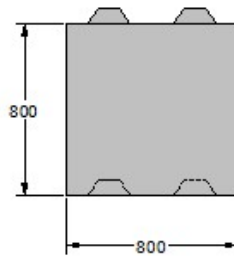
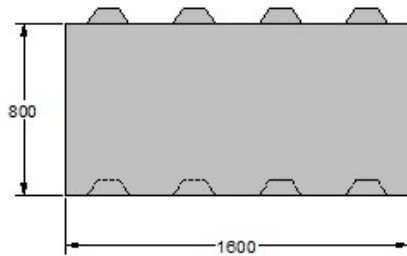
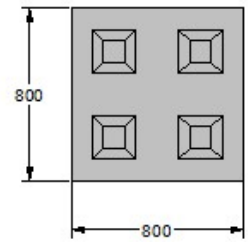
RETAINING BLOCKS

FCC PRECAST

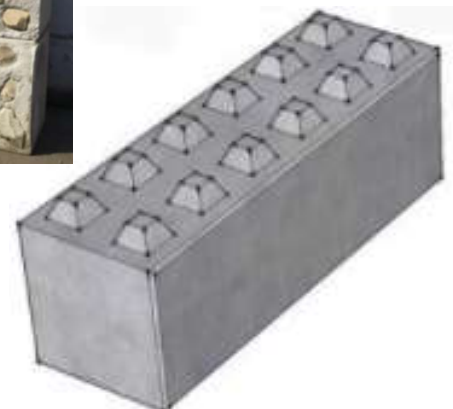
CUSTOMIZED TO SIZE



SR. NO.	L X W X H (mm)	WEIGHT (Approx Kg)
1	1600 X 800 X 800	2250
2	800 X 800 X 800	1125



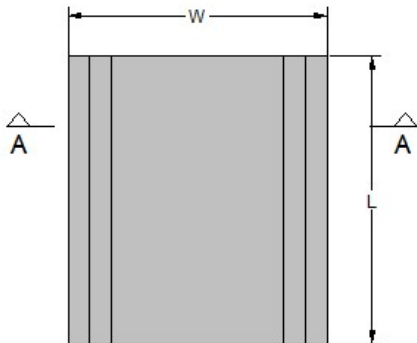
SR. NO.	L X W X H (mm)	WEIGHT (Approx Kg)
1	1800 X 600 X 600	1450
2	1500 X 600 X 600	1250
3	1200 X 600 X 600	950
4	900 X 600 X 600	750
5	600 X 600 X 600	500



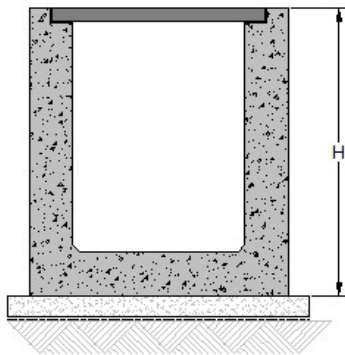
PC TRENCHS

FCC PRECAST

CUSTOMIZED TO SIZE



PLAN



SECTION A-A



FCC PRECAST

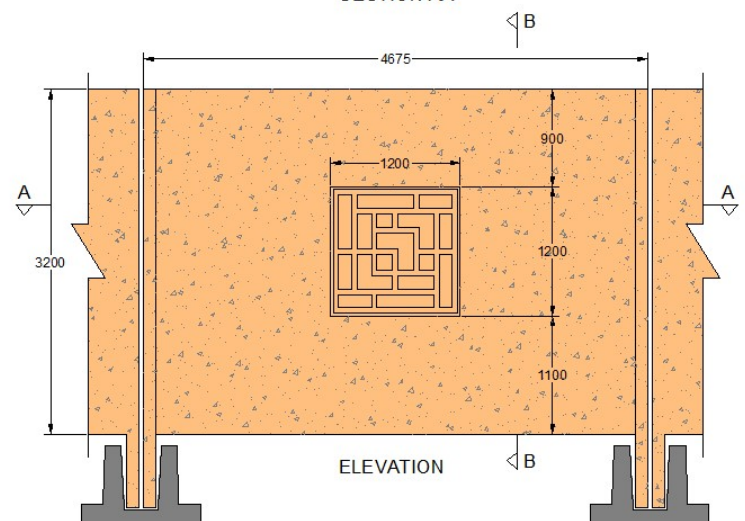
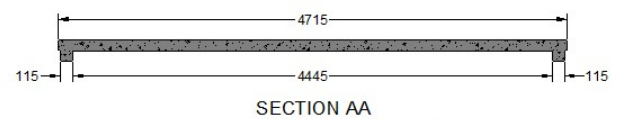
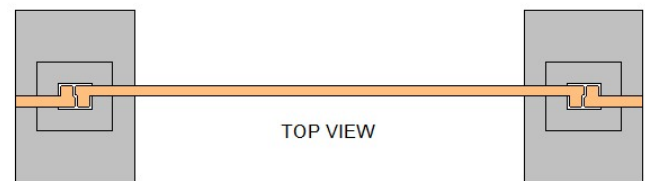
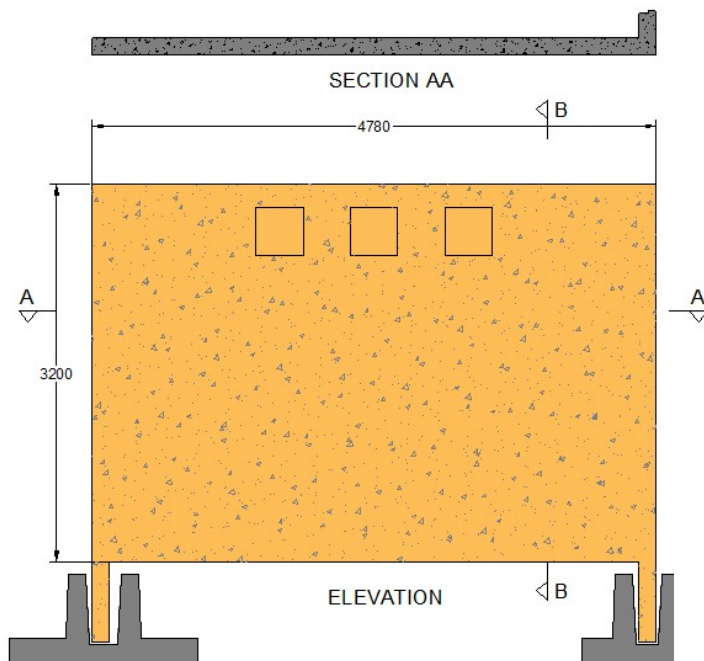
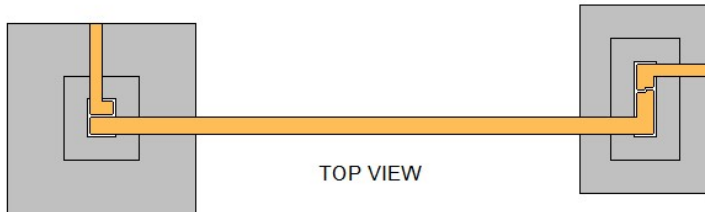
Figure 10.10 is a cross-sectional diagram of a precast concrete wall. The wall consists of a central precast concrete wall panel (orange) flanked by precast concrete columns (orange) and precast concrete caps (orange). The wall is supported by precast concrete footings (grey). The ground level is indicated by a dashed line, with the highest and lowest ground levels (FGL) marked. The wall thickness is 4000 mm. Section lines A-A are shown at the top and bottom of the wall.



DECORATIVE FENCE - 1A

FCC PRECAST

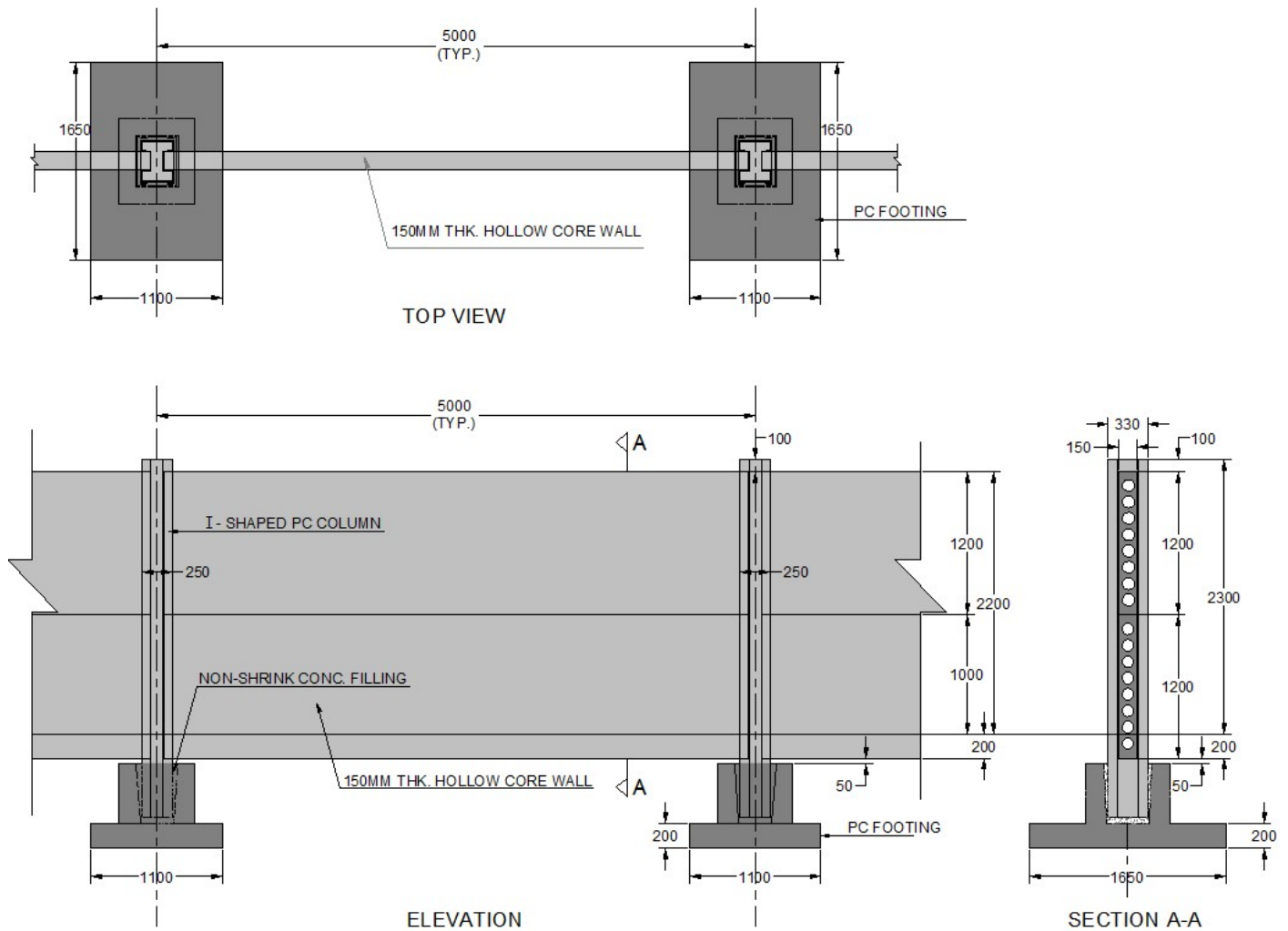
CUSTOMIZED TO SIZE



HOLLOWCORE FENCE - TYPE 2

FCC PRECAST

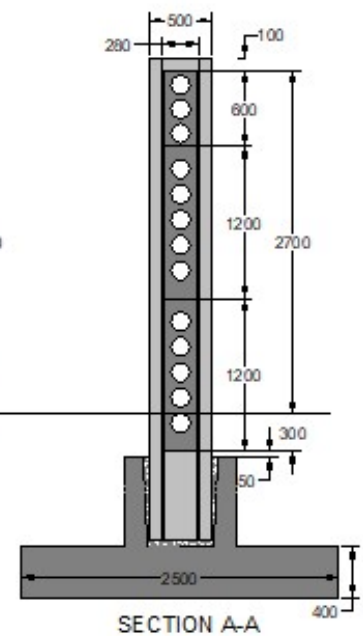
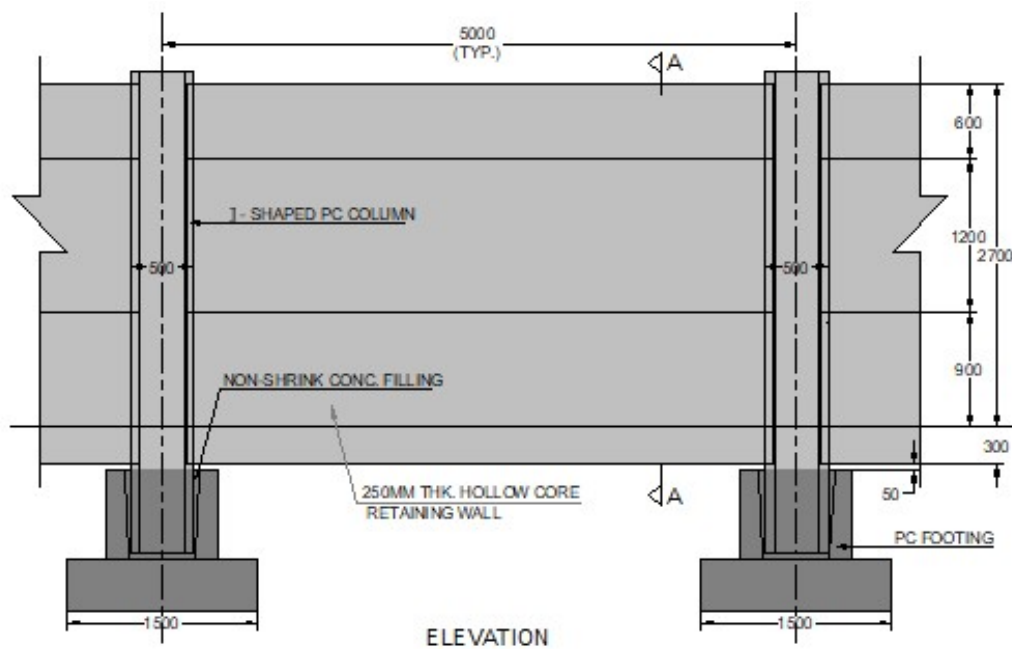
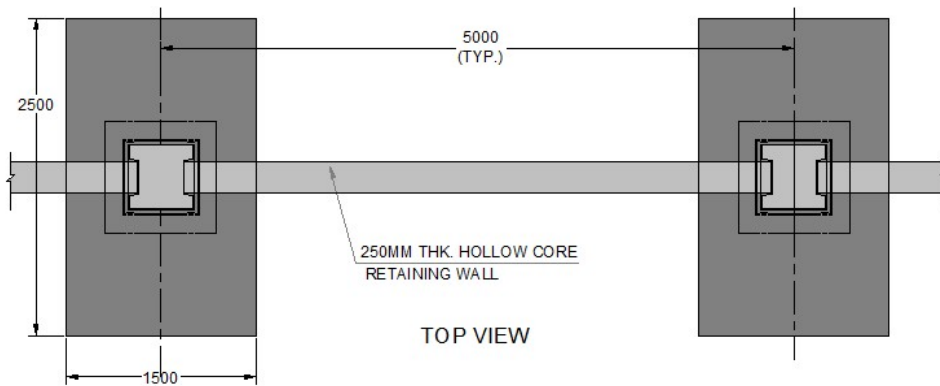
CUSTOMIZED TO SIZE



HOLLOWCORE FENCE – TYPE 2A

FCC PRECAST

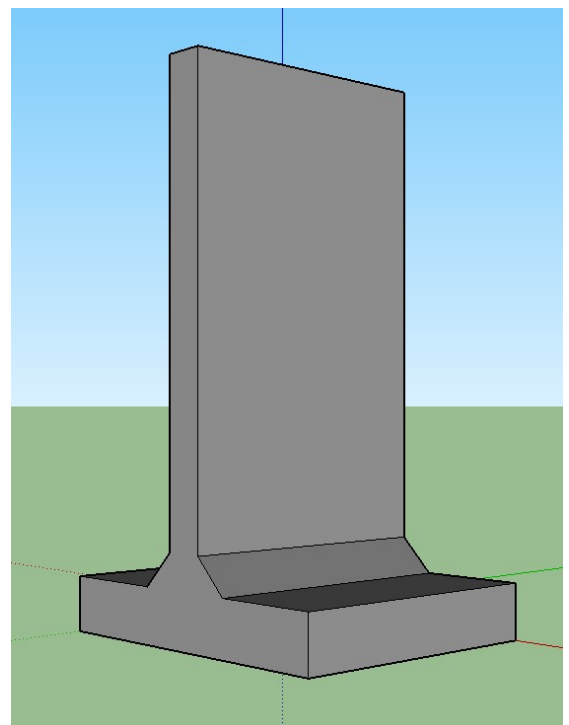
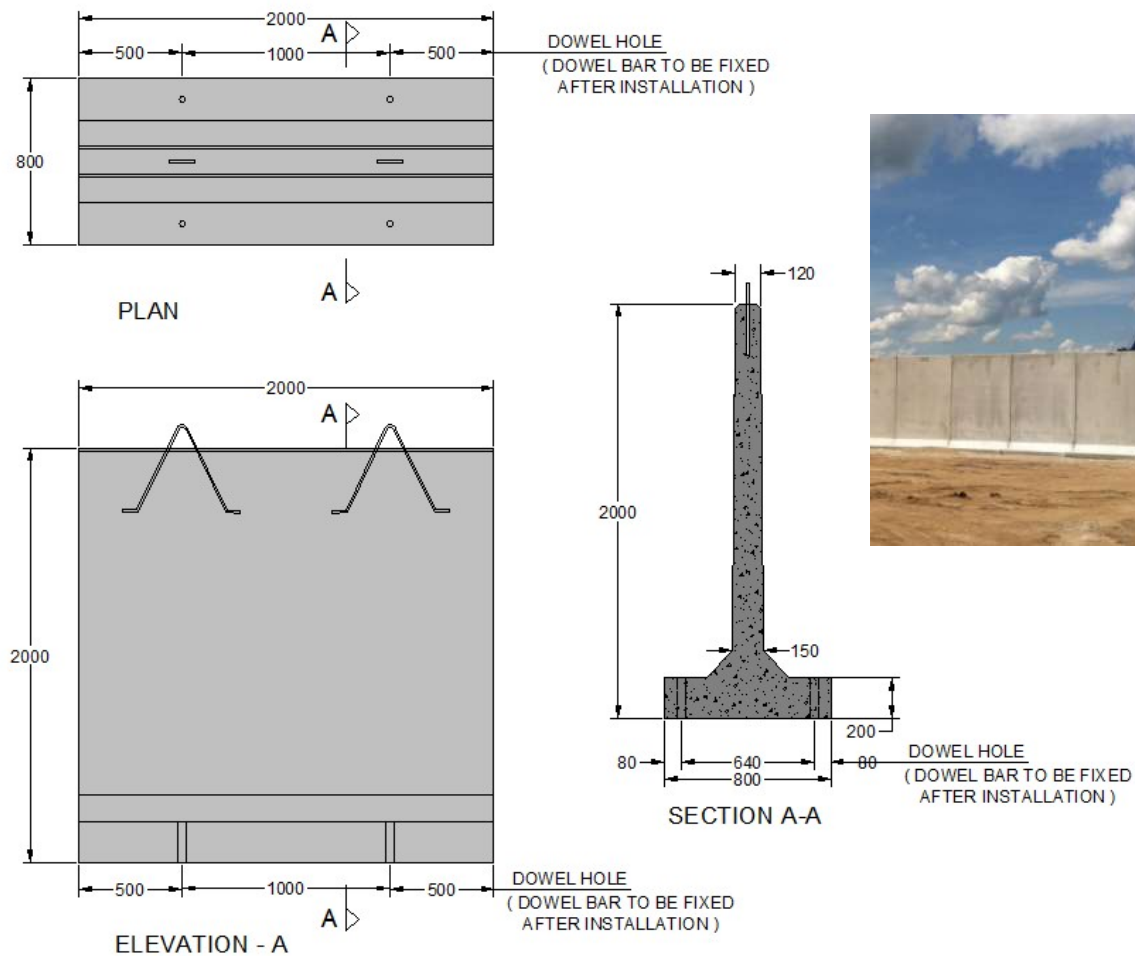
CUSTOMIZED TO SIZE

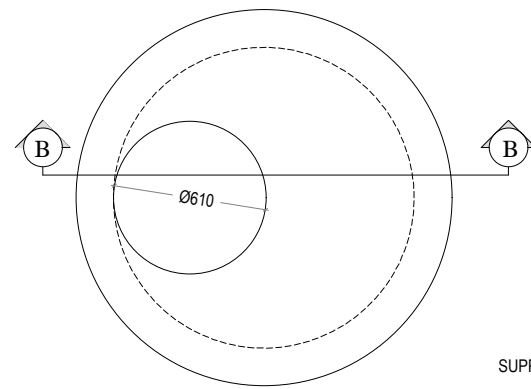


BARRIER FENCE - TYPE 3

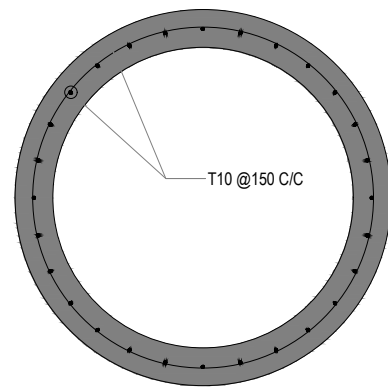
FCC PRECAST

CUSTOMIZED TO SIZE

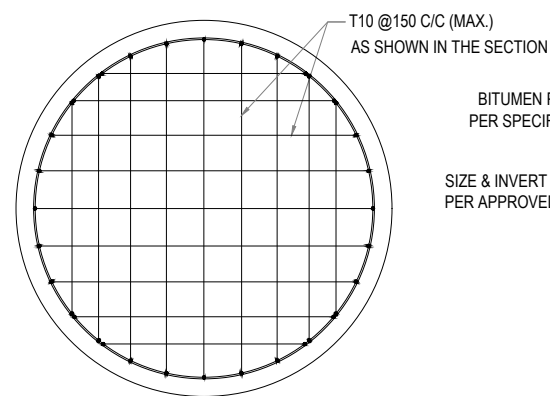




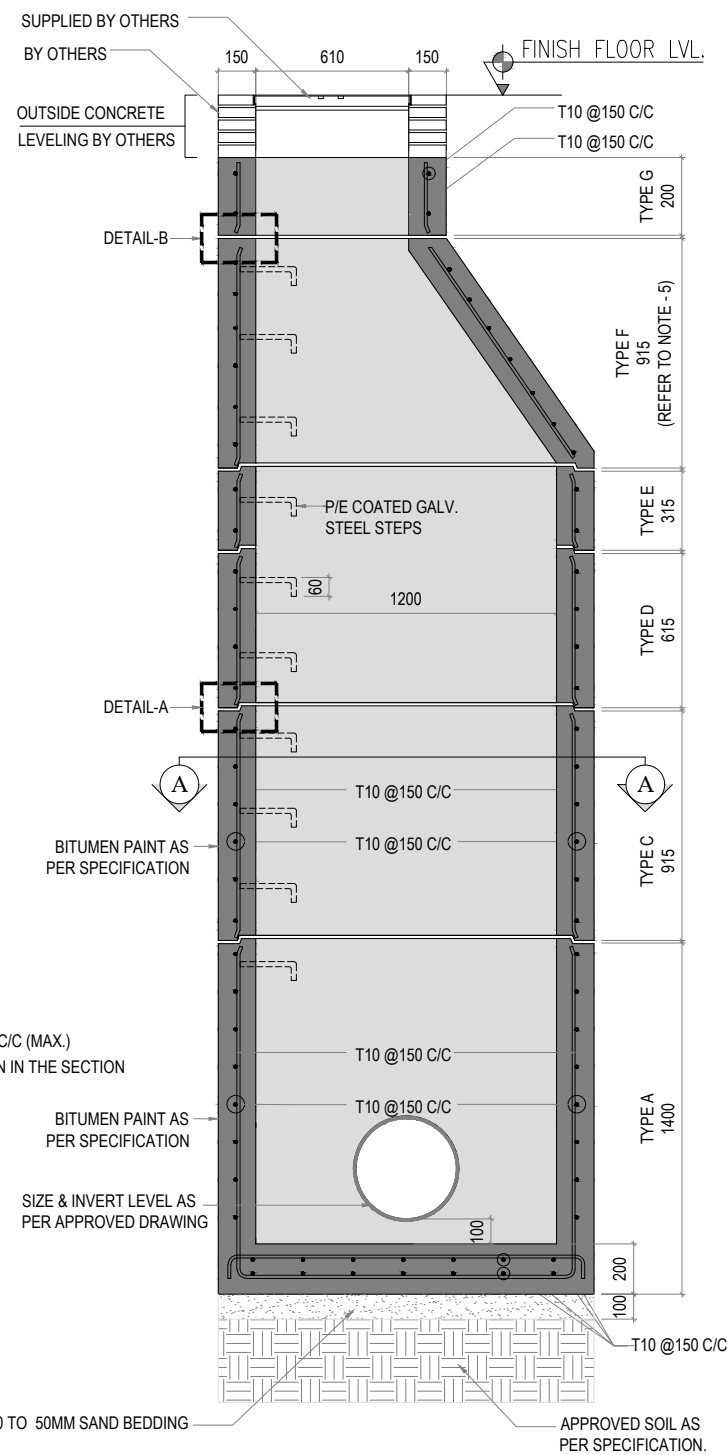
1 TOP PLAN
SCALE 1:20



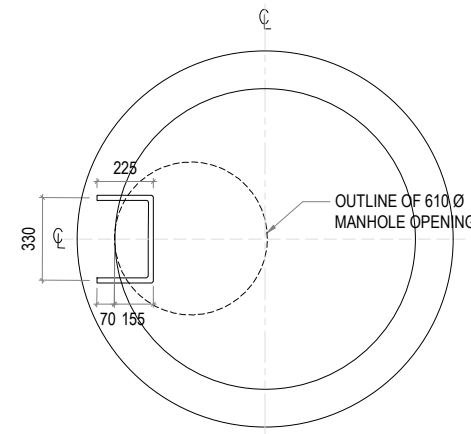
2 SECTION A-A
SCALE 1:20



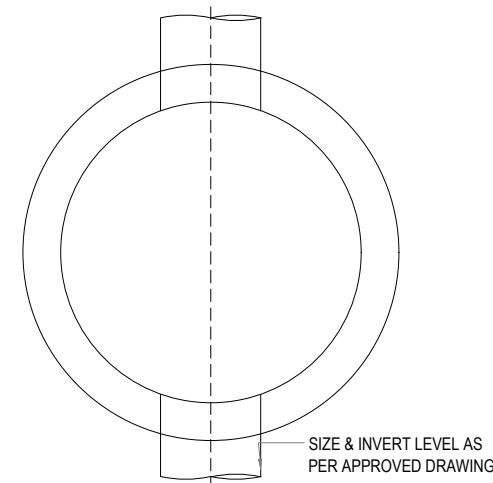
3 BASE SLAB REINF. DETAILS
SCALE 1:20



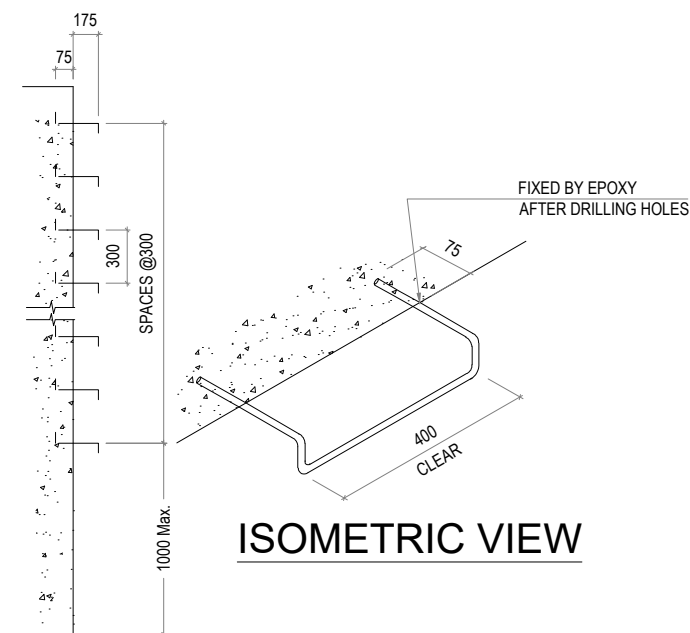
4 SECTION B-B
SCALE 1:20



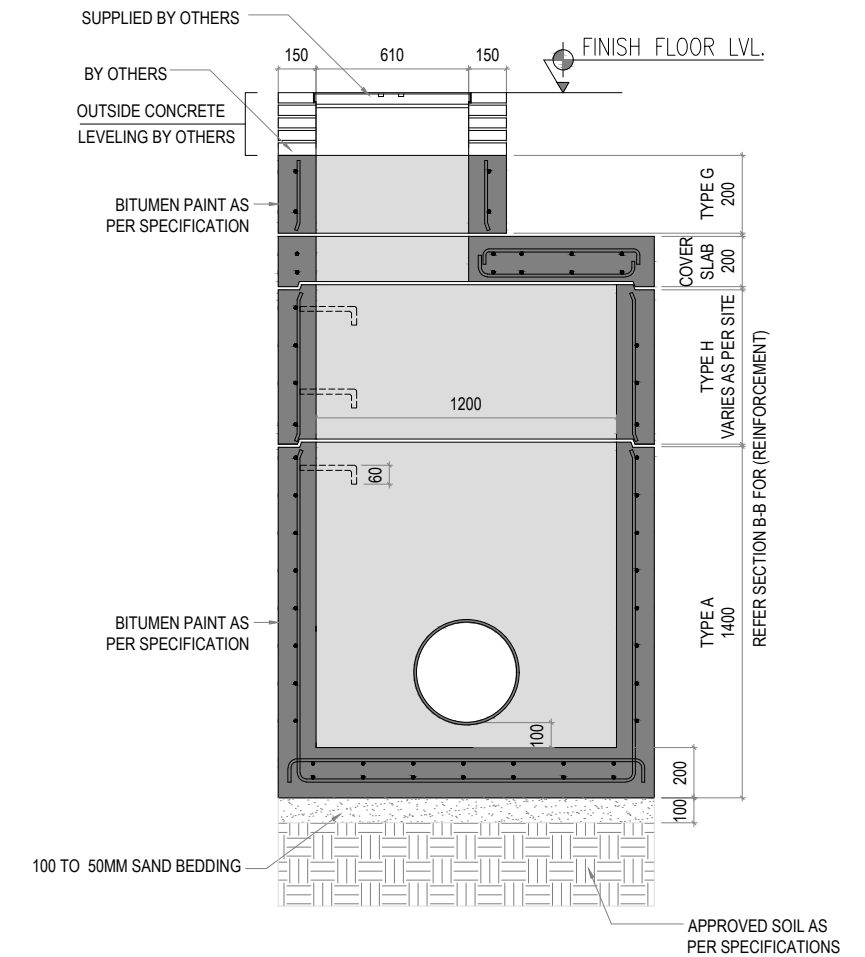
5 STEP DETAIL
SCALE 1:20



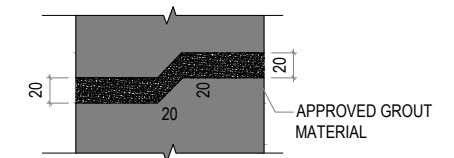
6 BOTTOM PLAN
SCALE 1:20



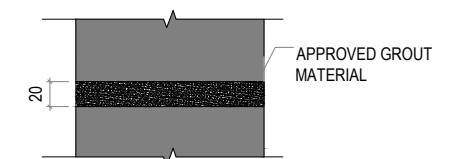
SIDE ELEVATION



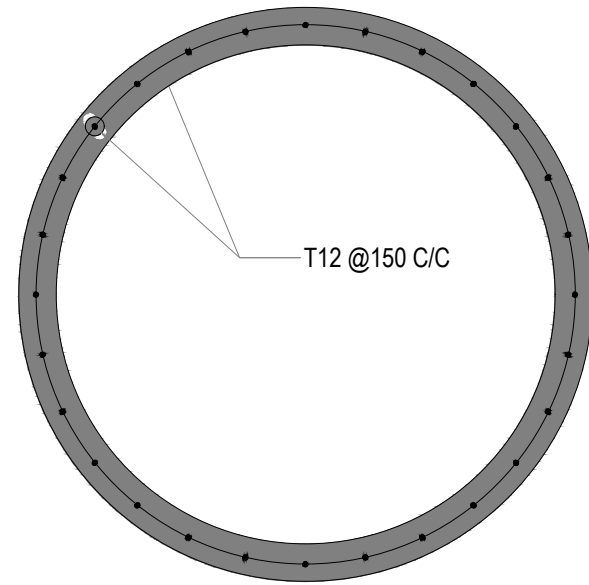
8 SECTION - C
SCALE 1:20



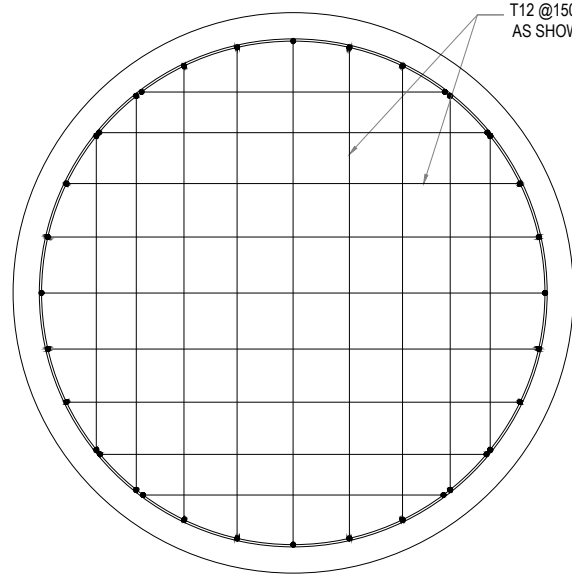
9 DETAIL - A (TYP.)
SCALE 1:20



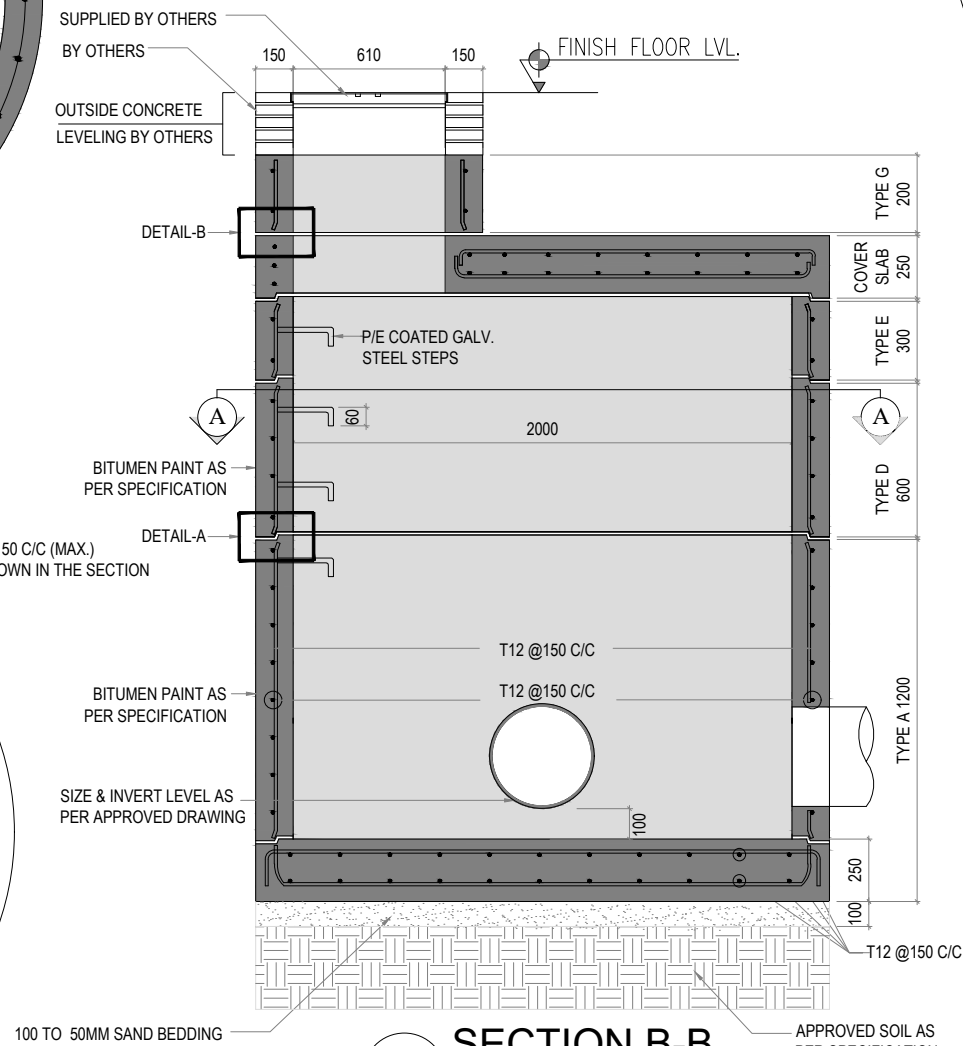
10 DETAIL - B (TYP.)
SCALE 1:20



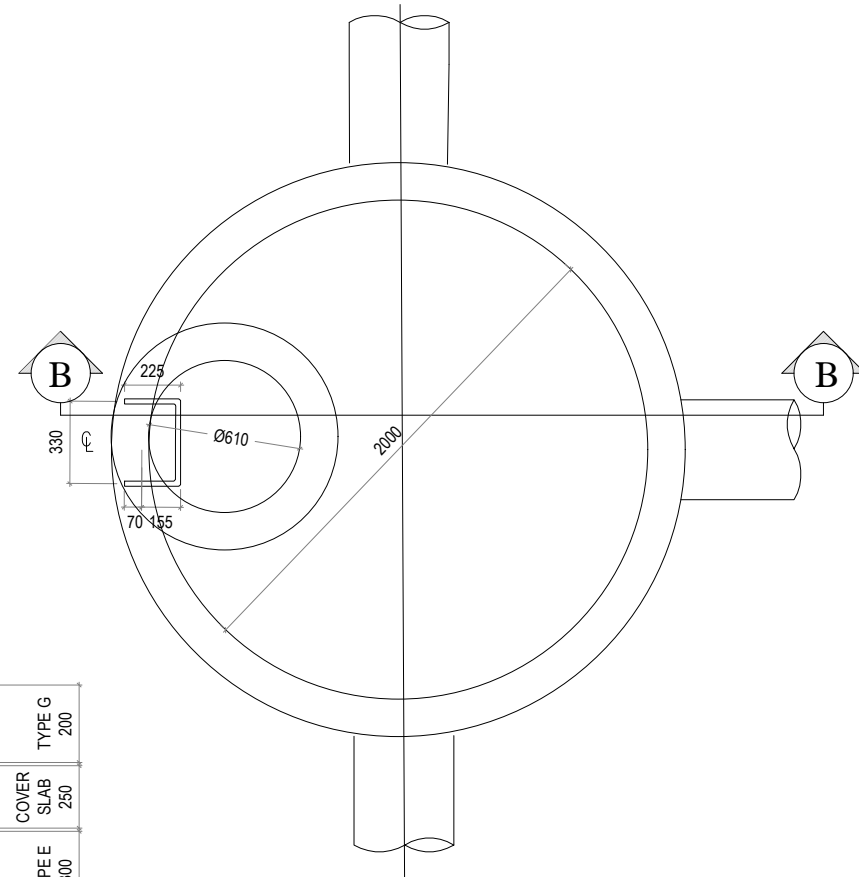
2 SECTION A-A
SCALE 1:20



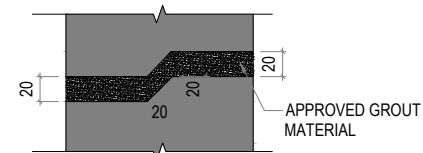
3 BASE SLAB REINF. DETAILS
SCALE 1:20



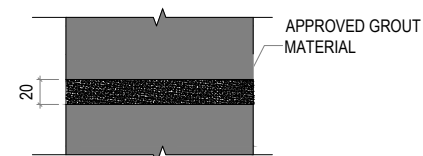
4 SECTION B-B
SCALE 1:20



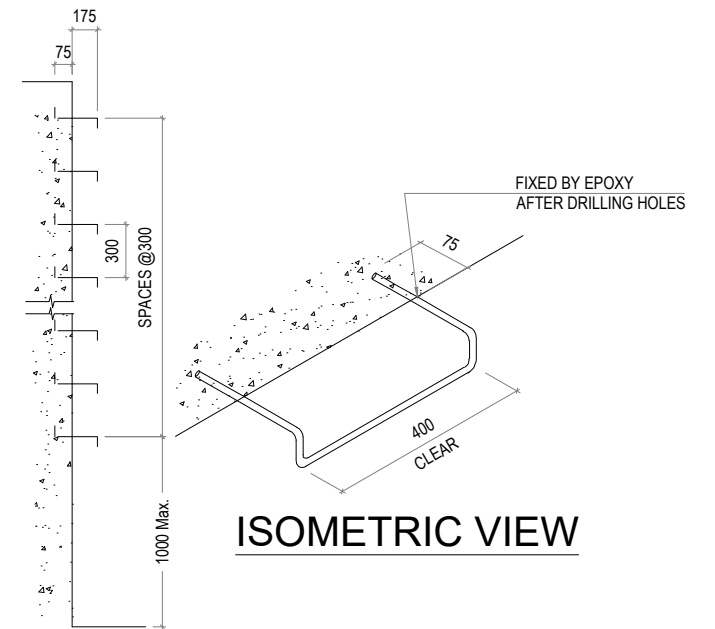
1 TOP PLAN
SCALE 1:20



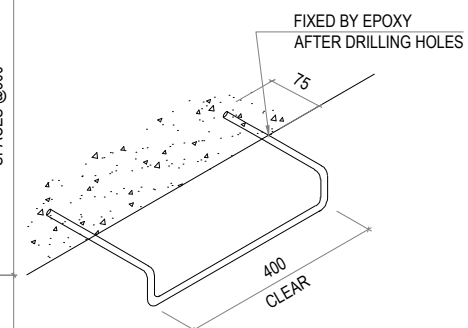
4 DETAIL - A (TYP.)
SCALE 1:20

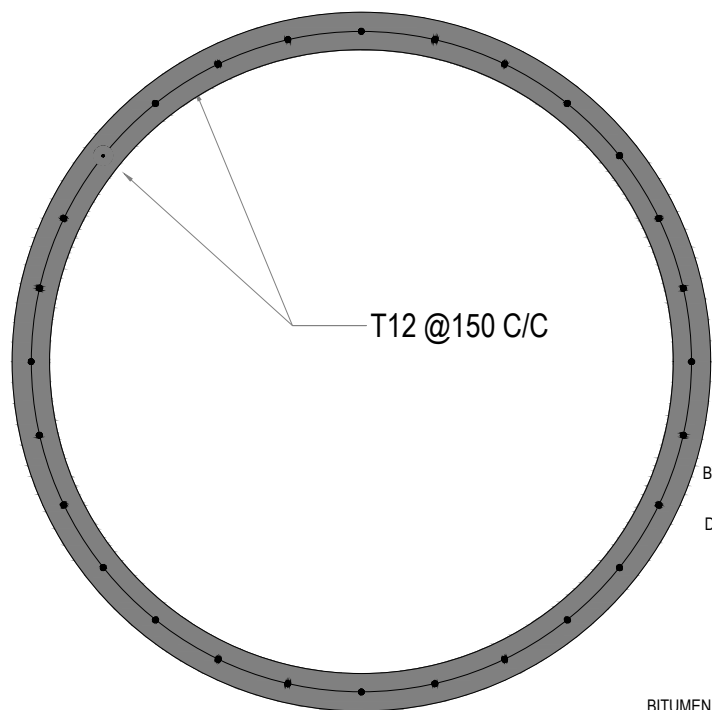


5 DETAIL - B (TYP.)
SCALE 1:20

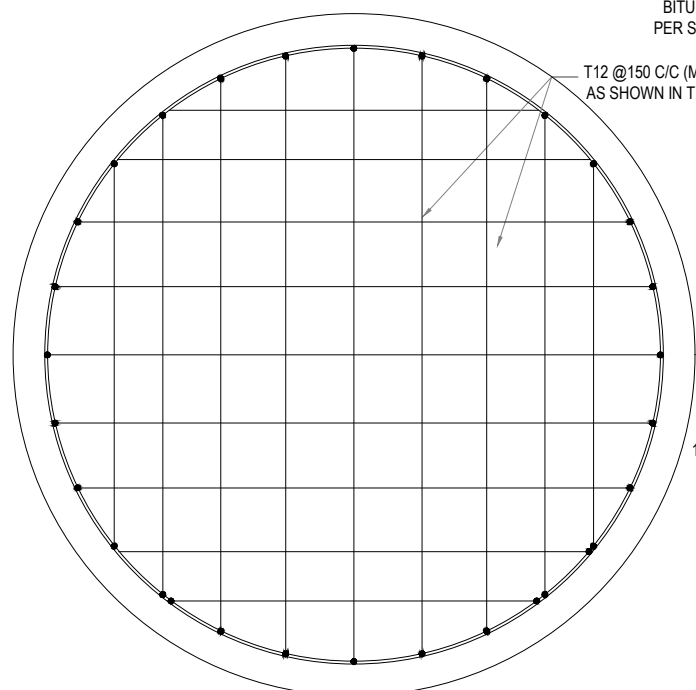


SIDE ELEVATION

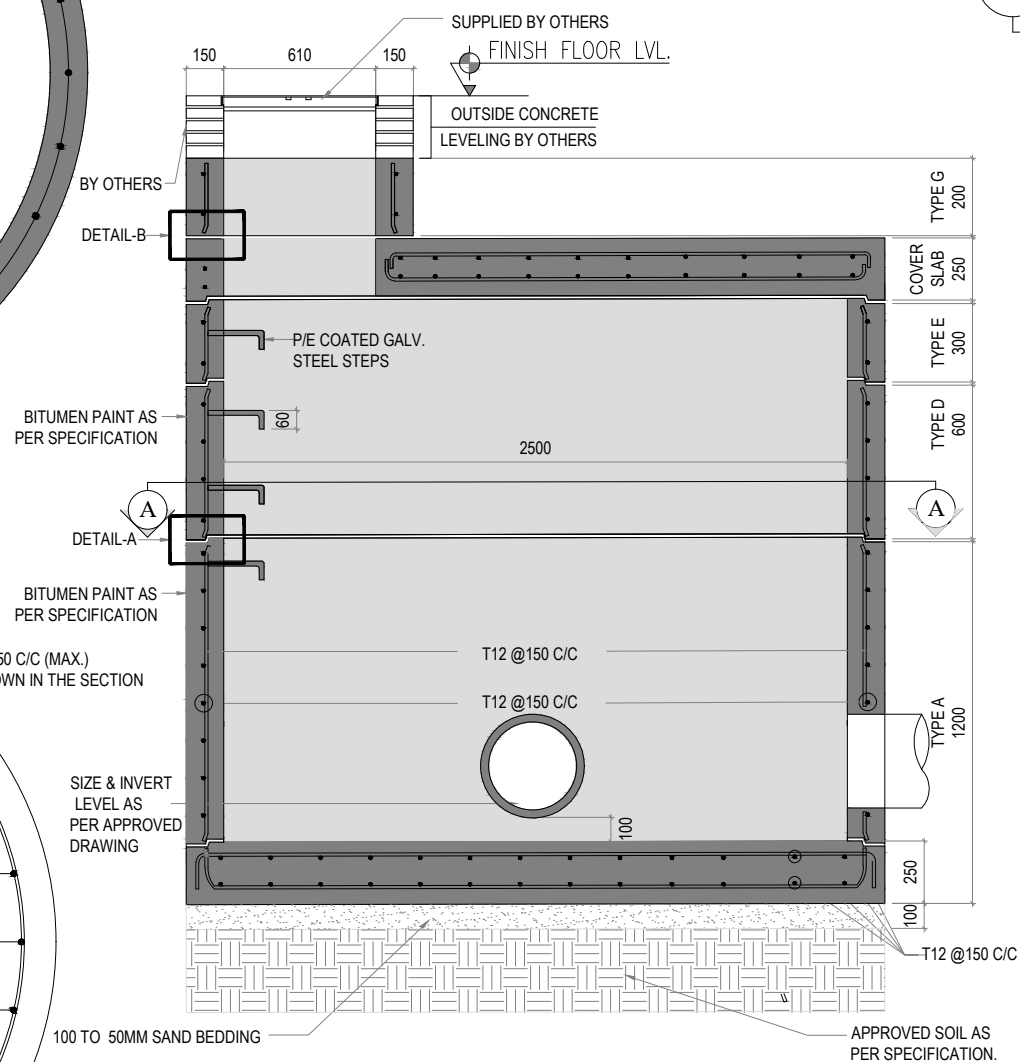




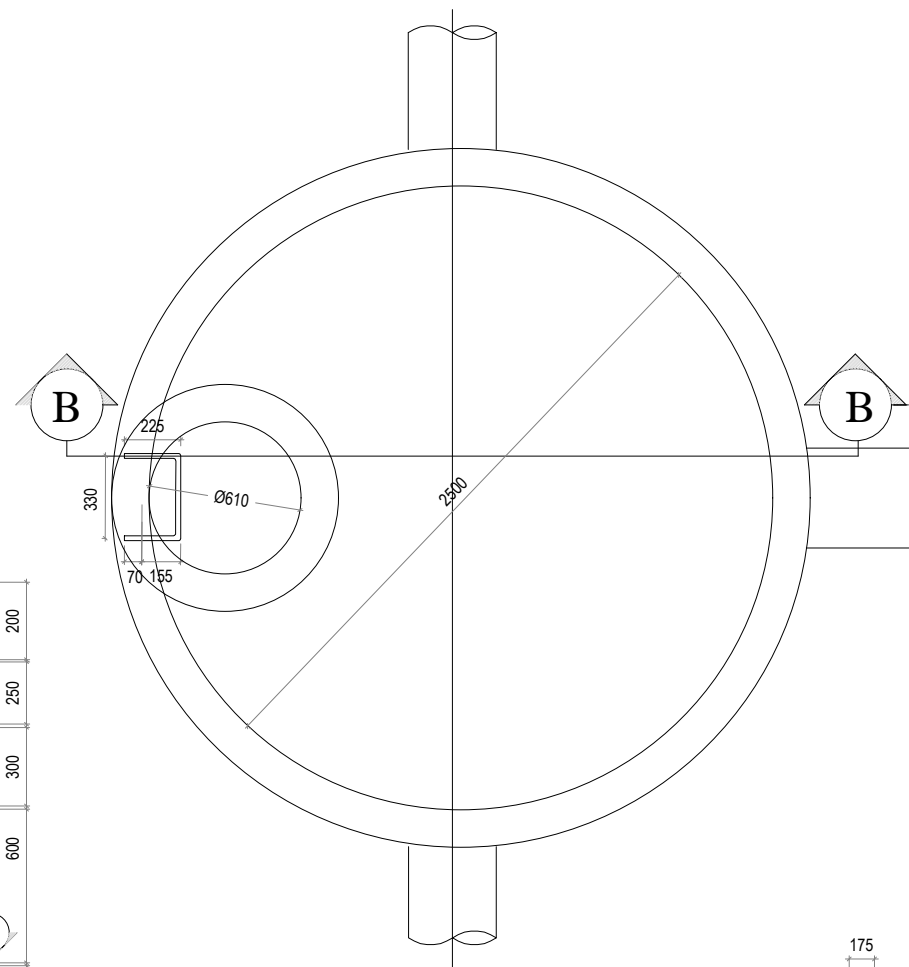
2 SECTION A-A
SCALE 1:20



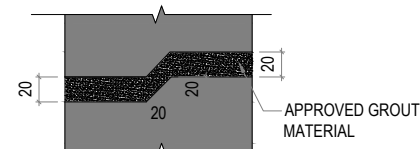
3 BASE SLAB REINF. DETAILS
SCALE 1:20



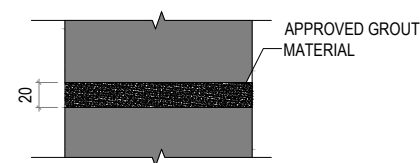
4 SECTION B-B
SCALE 1:20



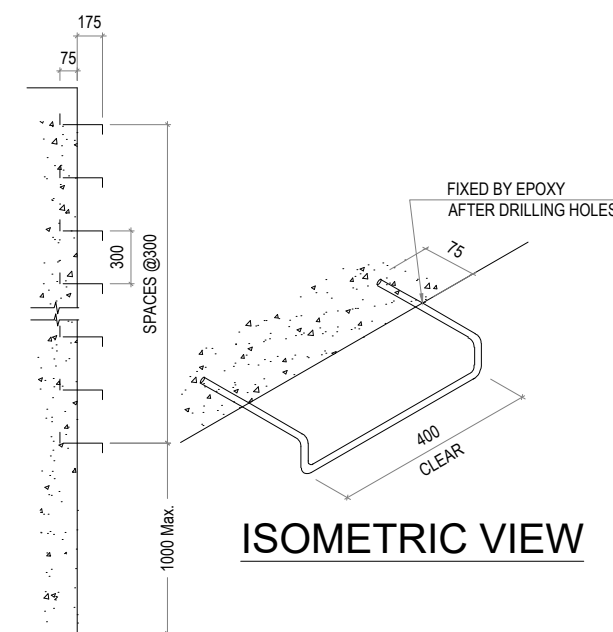
1 TOP PLAN
SCALE 1:20



5 DETAIL - A (TYP.)
SCALE 1:20



6 DETAIL - B (TYP.)
SCALE 1:20



ISOMETRIC VIEW

SIDE ELEVATION

